

Recombinant Human OSMR Protein (Glu28-Ser739), C-His tagged

Cat. No. OSMR-3753H Lot. No. (See product label)

SPECIFICATION

Product Overview	Recombinant human OSMRB (Glu28-Ser739) fused with the C-terminal His tag was expressed in E. coli.
Species	Human
Source	E.coli
ProteinLength	Glu28-Ser739
Description	<p>This gene encodes a member of the type I cytokine receptor family. The encoded protein heterodimerizes with interleukin 6 signal transducer to form the type II oncostatin M receptor and with interleukin 31 receptor A to form the interleukin 31 receptor, and thus transduces oncostatin M and interleukin 31 induced signaling events. Mutations in this gene have been associated with familial primary localized cutaneous amyloidosis. Alternatively spliced transcript variants encoding different isoforms have been found for this gene.</p>
Form	Lyophilized powder/frozen liquid
Molecular Mass	78.32 kDa
Purity	>90% as determined by SDS-PAGE.
Notes	For research use only.

 Tel: 1-631-559-9269 1-516-512-3133

 Email: info@creative-biomart.com  Fax: 1-631-938-8127

 45-1 Ramsey Road, Shirley, NY 11967, USA

Storage	Use a manual defrost freezer and avoid repeated freeze thaw cycles. Store at 2 to 8 centigrade for one week. Store at -20 to -80 centigrade for twelve months from the date of receipt.
Storage Buffer	Supplied as solution form in PBS or lyophilized from PBS.
Reconstitution	Reconstitute in sterile water for a stock solution.
Shipping	They are shipped out with dry ice/blue ice unless customers require otherwise.

GENE INFORMATION

Gene Name	OSMR oncostatin M receptor [Homo sapiens (human)]
Official Symbol	OSMR
Synonyms	OSMR; oncostatin M receptor; oncostatin-M-specific receptor subunit beta; OSMRB; IL-31RB; IL-31R-beta; IL-31R subunit beta; IL-31 receptor subunit beta; interleukin-31 receptor subunit beta; oncostatin-M specific receptor beta subunit; PLCA1; MGC75127; MGC150626; MGC150627;
Gene ID	9180
mRNA Refseq	NM_003999
Protein Refseq	NP_003990
MIM	601743
UniProt ID	Q99650

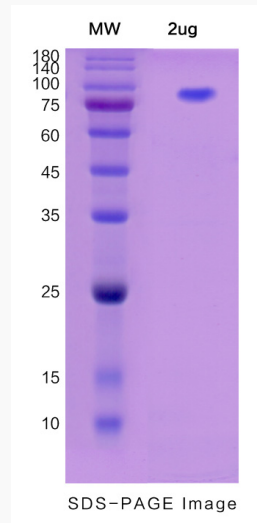
 Tel: 1-631-559-9269 1-516-512-3133

 Email: info@creative-biomart.com  Fax: 1-631-938-8127

 45-1 Ramsey Road, Shirley, NY 11967, USA



SDS-PAGE



Tel: 1-631-559-9269 1-516-512-3133

Email: info@creative-biomart.com Fax: 1-631-938-8127

45-1 Ramsey Road, Shirley, NY 11967, USA