

Recombinant Human OSTF1 Protein, Myc/DDK-tagged, C13 and N15-labeled

Cat. No. OSTF1-6407H Lot. No. (See product label)

SPECIFICATION

Product Overview	OSTF1 MS Standard C13 and N15-labeled recombinant protein (NP_036515) with a C-terminal MYC/DDK tag, was expressed in HEK293 cells.
Species	Human
Source	HEK293
Description	Osteoclast-stimulating factor-1 is an intracellular protein produced by osteoclasts that indirectly induces osteoclast formation and bone resorption.
Molecular Mass	23.6 kDa
AA Sequence	MSKPPPKPVKPGQVKVFRALYTFEPRTPDELYFEEGDIIYITDMSDTNWWWKGTSKG RTGLIPSNYVAEQAESIDNPLHEAAKRGNLSWLRECLDNRVGVNGLDKAGSTALYW ACHGGHKDIVEMLFTQPNIELNQQNKLGDALHAAAWKGYADIVQLLLAKGARTDLR NIEKKLAFDMATNAACASLLKKKQGTDAVRTLSNAEDYLDDSDTRTRPLEQKLIS EEDLAANDILDYKDDDDKV
Purity	> 80% as determined by SDS-PAGE and Coomassie blue staining
Stability	Stable for 3 months from receipt of products under proper storage and handling conditions.
Storage	Store at -80 centigrade. Avoid repeated freeze-thaw cycles.

 Tel: 1-631-559-9269 1-516-512-3133

 Email: info@creative-biomart.com  Fax: 1-631-938-8127

 45-1 Ramsey Road, Shirley, NY 11967, USA

Concentration 50 µg/mL as determined by BCA

Storage Buffer 100 mM glycine, 25 mM Tris-HCl, pH 7.3.

GENE INFORMATION

Gene Name OSTF1 osteoclast stimulating factor 1 [Homo sapiens (human)]

Official Symbol OSTF1

Synonyms OSTF1; osteoclast stimulating factor 1; osteoclast-stimulating factor 1; bA235O14.1; OSF; SH3P2; FLJ20559;

Gene ID 26578

mRNA Refseq NM_012383

Protein Refseq NP_036515

MIM 610180

UniProt ID Q92882

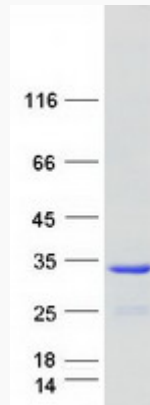
 Tel: 1-631-559-9269 1-516-512-3133

 Email: info@creative-biomart.com  Fax: 1-631-938-8127

 45-1 Ramsey Road, Shirley, NY 11967, USA



SDS-PAGE



Tel: 1-631-559-9269 1-516-512-3133

Email: info@creative-biomart.com Fax: 1-631-938-8127

45-1 Ramsey Road, Shirley, NY 11967, USA