

Recombinant Human OSTM1 protein, His-tagged

Cat. No. OSTM1-2319H Lot. No. (See product label)

SPECIFICATION

Product Overview	Recombinant Human OSTM1 protein(NP_054747.2) (Met 1- 284) was expressed in HEK293, fused with a C-terminal polyhistidine tag.
Species	Human
Source	HEK293
ProteinLength	1-284 aa
Form	Lyophilized from sterile PBS, pH 7.4.
Molecular Mass	The recombinant human OSTM1 comprises 264 amino acids and has a calculated molecular mass of 29.7 kDa. As a result of glycosylation, the recombinant protein migrates as an approximately 40-50 kDa protein in SDS-PAGE under reducing conditions.
Endotoxin	< 1.0 EU per µg of the protein as determined by the LAL method.
Purity	> 97 % as determined by SDS-PAGE
Storage	Store it under sterile conditions at -20°C to -80°C upon receiving. Recommend to aliquot the protein into smaller quantities for optimal storage. Avoid repeated freeze-thaw cycles.
Reconstitution	It is recommended that sterile water be added to the vial to prepare a stock solution of

 Tel: 1-631-559-9269 1-516-512-3133

 Email: info@creative-biomart.com  Fax: 1-631-938-8127

 45-1 Ramsey Road, Shirley, NY 11967, USA

0.2 ug/ul. Centrifuge the vial at 4°C before opening to recover the entire contents.

protein Refseq-Weblink http://www.ncbi.nlm.nih.gov/protein/NP_054747.2

Unit ID Q86WC4

Unit ID-Weblink <http://www.uniprot.org/uniprot/Q86WC4>

GENE INFORMATION

Gene Name [OSTM1 osteopetrosis associated transmembrane protein 1 \[Homo sapiens \]](#)

Official Symbol [OSTM1](#)

Synonyms OSTM1; osteopetrosis associated transmembrane protein 1; osteopetrosis-associated transmembrane protein 1; GL; HSPC019; grey-lethal osteopetrosis; GAIP-interacting protein N terminus; GIPN; OPTB5;

Gene ID [28962](#)

mRNA Refseq [NM_014028](#)

protein Refseq [NP_054747](#)

MIM [607649](#)

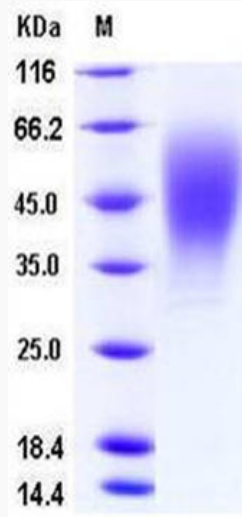
 Tel: 1-631-559-9269 1-516-512-3133

 Email: info@creative-biomart.com  Fax: 1-631-938-8127

 45-1 Ramsey Road, Shirley, NY 11967, USA



SDS-PAGE



Tel: 1-631-559-9269 1-516-512-3133

Email: info@creative-biomart.com Fax: 1-631-938-8127

45-1 Ramsey Road, Shirley, NY 11967, USA