

# Recombinant Human OSTM1 Protein, Myc/DDK-tagged, C13 and N15-labeled

Cat. No. OSTM1-3891H Lot. No. (See product label)

## SPECIFICATION

### Product Overview

OSTM1 MS Standard C13 and N15-labeled recombinant protein (NP\_054747) with a C-terminal MYC/DDK tag, was expressed in HEK293 cells.

### Species

Human

### Source

HEK293

### Description

This gene encodes a protein that may be involved in the degradation of G proteins via the ubiquitin-dependent proteasome pathway. The encoded protein binds to members of subfamily A of the regulator of the G-protein signaling (RGS) family through an N-terminal leucine-rich region. This protein also has a central RING finger-like domain and E3 ubiquitin ligase activity. This protein is highly conserved from flies to humans. Defects in this gene may cause the autosomal recessive, infantile malignant form of osteopetrosis.

### Molecular Mass

37.3 kDa

### AA Sequence

MEPGPTAAQRRCSLPPWLPLGLLLWSGLALGALPFGSSPHRVFHDLLSEQQLLEVE  
 DLSLSLLQGGGLGPLSLPPDLPDLDPEDCRELLDFANSSAELTGCLVRSARPVRLCQ  
 TCYPLFQQVVSKMDNISRAAGNTSESQSCARSLLMADRMQIVVILSEFFNTTWQEA  
 NCANCLTNNSEELSNSTVYFLNLFNHTLTCFEHNLQGNAHSLQTKNYSEVCKNCR  
 EAYKTLSSLYSEMQKMNELENKAEPGTHLCIDVEDAMNITRKLWSRTFNCSVPCSD  
 TVPVIAVSVFILFLPVVFLSSFLHSEQKKRKLILPKRLKSSTSFANIQENSNTTRTRPLE

 Tel: 1-631-559-9269 1-516-512-3133

 Email: [info@creative-biomart.com](mailto:info@creative-biomart.com)  Fax: 1-631-938-8127

 45-1 Ramsey Road, Shirley, NY 11967, USA

QKLISEEDLAANDILDYKDDDDKV

**Purity** > 80% as determined by SDS-PAGE and Coomassie blue staining

**Stability** Stable for 3 months from receipt of products under proper storage and handling conditions.

**Storage** Store at -80 centigrade. Avoid repeated freeze-thaw cycles.

**Concentration** 50 µg/mL as determined by BCA

**Storage Buffer** 100 mM glycine, 25 mM Tris-HCl, pH 7.3.

## GENE INFORMATION

**Gene Name** [OSTM1 osteopetrosis associated transmembrane protein 1 \[ Homo sapiens \(human\) \]](#)

**Official Symbol** [OSTM1](#)

**Synonyms** OSTM1; osteopetrosis associated transmembrane protein 1; osteopetrosis-associated transmembrane protein 1; GL; HSPC019; grey-lethal osteopetrosis; GAIP-interacting protein N terminus; GIPN; OPTB5;

**Gene ID** [28962](#)

**mRNA Refseq** [NM\\_014028](#)

**Protein Refseq** [NP\\_054747](#)

**MIM** [607649](#)

 Tel: 1-631-559-9269 1-516-512-3133

 Email: [info@creative-biomart.com](mailto:info@creative-biomart.com)  Fax: 1-631-938-8127

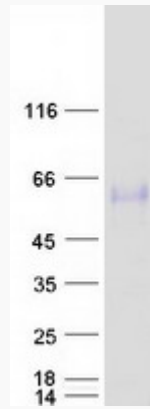
 45-1 Ramsey Road, Shirley, NY 11967, USA



UniProt ID

Q86WC4

SDS-PAGE



Tel: 1-631-559-9269 1-516-512-3133

Email: [info@creative-biomart.com](mailto:info@creative-biomart.com) Fax: 1-631-938-8127

45-1 Ramsey Road, Shirley, NY 11967, USA