

Recombinant Human OTUB2 Protein, Myc/DDK-tagged, C13 and N15-labeled

Cat. No. OTUB2-4847H Lot. No. (See product label)

SPECIFICATION

| | |
|-------------------------|--|
| Product Overview | OTUB2 MS Standard C13 and N15-labeled recombinant protein (NP_075601) with a C-terminal MYC/DDK tag, was expressed in HEK293 cells. |
| Species | Human |
| Source | HEK293 |
| Description | This gene encodes one of several deubiquitylating enzymes. Ubiquitin modification of proteins is needed for their stability and function; to reverse the process, deubiquityling enzymes remove ubiquitin. This protein contains an OTU domain and binds Ubal (ubiquitin aldehyde); an active cysteine protease site is present in the OTU domain. |
| Molecular Mass | 27.2 kDa |
| AA Sequence | MSETSFNLISEKCDILSILRDHPENRIYRRKIEELSKRFTAIRKTKGDGNCFYRALGYS YLESLLGKSREIFKFKERVLPNDLLAAGFEEHKFRNFFNAFYSVVELVEKDGSVSS LLKVFNDQSASDHIVQFLRLLTSAFIRNRADFFRHFIDEEMDIKDFCTHEVEPMATEC DHIQITALSQALSIALQVEYVDEMDTALNHHVFPEAATPSVYLLYKTSHYNILYAADKH SGPTRTRPLEQKLISEEDLAANDILDYKDDDDKV |
| Purity | > 80% as determined by SDS-PAGE and Coomassie blue staining |
| Stability | Stable for 3 months from receipt of products under proper storage and handling |

 Tel: 1-631-559-9269 1-516-512-3133

 Email: info@creative-biomart.com  Fax: 1-631-938-8127

 45-1 Ramsey Road, Shirley, NY 11967, USA

conditions.

Storage Store at -80 centigrade. Avoid repeated freeze-thaw cycles.

Concentration 50 µg/mL as determined by BCA

Storage Buffer 100 mM glycine, 25 mM Tris-HCl, pH 7.3.

GENE INFORMATION

Gene Name OTUB2 OTU deubiquitinase, ubiquitin aldehyde binding 2 [Homo sapiens (human)]

Official Symbol OTUB2

Synonyms OTUB2; OTU domain, ubiquitin aldehyde binding 2; C14orf137, chromosome 14 open reading frame 137; ubiquitin thioesterase OTUB2; FLJ21916; MGC3102; otubain-2; deubiquitinating enzyme OTUB2; ubiquitin-specific protease otubain 2; ubiquitin-specific-processing protease OTUB2; OTU domain-containing ubiquitin aldehyde-binding protein 2; OTB2; OTU2; C14orf137;

Gene ID 78990

mRNA Refseq NM_023112

Protein Refseq NP_075601

MIM 608338

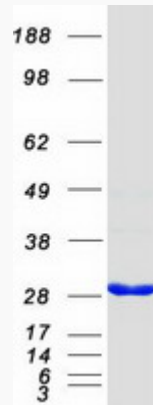
UniProt ID Q96DC9

 Tel: 1-631-559-9269 1-516-512-3133

 Email: info@creative-biomart.com  Fax: 1-631-938-8127

 45-1 Ramsey Road, Shirley, NY 11967, USA

SDS-PAGE



 Tel: 1-631-559-9269 1-516-512-3133

 Email: info@creative-biomart.com  Fax: 1-631-938-8127

 45-1 Ramsey Road, Shirley, NY 11967, USA