

Recombinant Human OTUB2, His-tagged

Cat. No. OTUB2-64H Lot. No. (See product label)

SPECIFICATION

Product Overview	Recombinant human OTUB2 protein, fused to His-tag at N-terminus, was expressed in E.coli and purified by using conventional chromatography techniques(1-234aa).
Species	Human
Source	E.coli
Description	OTUB2 (Ubiquitin thioesterase OTUB2) belongs to the peptidase C65 family. OTUB2 functions as a hydrolase that can remove conjugated ubiquitin from proteins in vitro and may therefore play an important regulatory role at the level of protein turnover by preventing degradation.
Form	Liquid. In 20mM Tris-HCl buffer (pH 8.0) containing 1mM DTT, 10% glycerol, 50mM NaCl
Molecular Weight	29.4kDa (254aa) confirmed by MALDI-TOF
Purity	> 95% by SDS - PAGE
Concentration	1mg/ml (determined by Bradford assay)
Sequences of amino acids	MGSSHHHHHH SSGLVPRGSH MSETSFNLIS EKCDILSILR DHPENRIYRR KIEELSKRFTAIRKTKGDGN CFYRALGYSY LESLLGKSRE IFKFKERVLQ TPNDLLAAGF EEHKFRNFFN AFYSVVELVE KDGSVSSLLK VFNDQSASDH IVQFLRLLTS AFIRNRADFF RHFIDEEMDI KDFCTHEVEP MATECDHIQI

 Tel: 1-631-559-9269 1-516-512-3133

 Email: info@creative-biomart.com  Fax: 1-631-938-8127

 45-1 Ramsey Road, Shirley, NY 11967, USA

TALSQALSIA LQVEYVDEMD TALNHHVFPE AATPSVYLLYKTSHYNILYA ADKH

Storage

Can be stored at +4°C short term (1-2 weeks). For long term storage, aliquot and store at -20°C or -70°C. Avoid repeated freezing and thawing cycles.

GENE INFORMATION

Gene Name

OTUB2 OTU domain, ubiquitin aldehyde binding 2 [Homo sapiens]

Synonyms

OTUB2; OTB2; OTU2; MGC3102; FLJ21916; C14orf137; ubiquitin thioesterase
 OTUB2; otubain-2; deubiquitinating enzyme OTUB2; ubiquitin-specific protease
 otubain 2; ubiquitin-specific-processing protease OTUB2; OTU domain-containing
 ubiquitin aldehyde-binding protein 2; NP_075601.1; EC 3.4.19.12

Gene ID

78990

mRNA Refseq

NM_023112

Protein Refseq

NP_075601

MIM

608338

UniProt ID

Q96DC9

**Chromosome
Location**

14q32.12

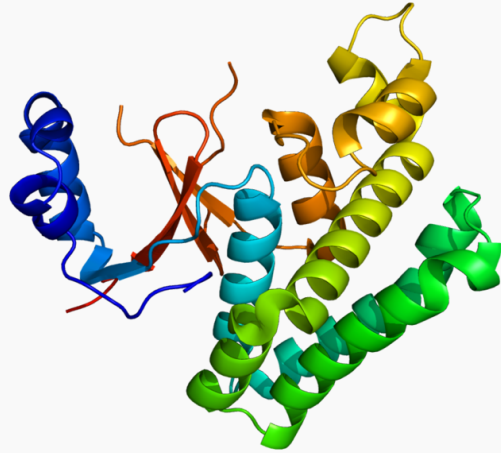
Function

cysteine-type peptidase activity; omega peptidase activity; peptidase activity; protein
 binding; ubiquitin-specific protease activity

 Tel: 1-631-559-9269 1-516-512-3133

 Email: info@creative-biomart.com  Fax: 1-631-938-8127

 45-1 Ramsey Road, Shirley, NY 11967, USA



Tel: 1-631-559-9269 1-516-512-3133

Email: info@creative-biomart.com Fax: 1-631-938-8127

45-1 Ramsey Road, Shirley, NY 11967, USA