

Recombinant Human OTUD1 Protein, His-tagged

Cat. No. OTUD1-2534H **Lot. No.** (See product label)

SPECIFICATION

Product Overview	Recombinant Human OTUD1 Protein (Lys309-Ser481) with a N-His tag was expressed in E. coli.
Species	Human
Source	E.coli
ProteinLength	Lys309-Ser481
Description	Deubiquitinating enzymes (DUBs; see MIM 603478) are proteases that specifically cleave ubiquitin (MIM 191339) linkages, negating the action of ubiquitin ligases. DUBA7 belongs to a DUB subfamily characterized by an ovarian tumor (OTU) domain.
Form	Freeze-dried powder
Molecular Mass	Predicted Molecular Mass: 23.4 kDa Accurate Molecular Mass: 23 kDa
Endotoxin	<1.0 EU per 1g (determined by the LAL method).
Purity	> 90%
Applications	Positive Control; Immunogen; SDS-PAGE; WB.

 Tel: 1-631-559-9269 1-516-512-3133

 Email: info@creative-biomart.com  Fax: 1-631-938-8127

 45-1 Ramsey Road, Shirley, NY 11967, USA

Stability	The thermal stability is described by the loss rate. The loss rate was determined by accelerated thermal degradation test, that is, incubate the protein at 37 centigrade for 48h, and no obvious degradation and precipitation were observed. The loss rate is less than 5% within the expiration date under appropriate storage condition.
Storage	Avoid repeated freeze/thaw cycles. Store at 2-8 centigrade for one month. Aliquot and store at -80 centigrade for 12 months.
Storage Buffer	20mM Tris, 150mM NaCl, pH8.0, containing 1mM EDTA, 1mM DTT, 0.01% SKL, 5% Trehalose and Proclin300.
Reconstitution	Reconstitute in 20mM Tris, 150mM NaCl (pH8.0) to a concentration of 0.1-1.0 mg/mL. Do not vortex.

GENE INFORMATION

Gene Name	OTUD1 OTU domain containing 1 [Homo sapiens (human)]
Official Symbol	OTUD1
Synonyms	OTUD1; OTU deubiquitinase 1; DUBA7; OTDC1; OTU domain-containing protein 1; DUBA-7; OTU domain containing 1; EC 3.4.19.12
Gene ID	220213
mRNA Refseq	NM_001145373
Protein Refseq	NP_001138845
MIM	612022

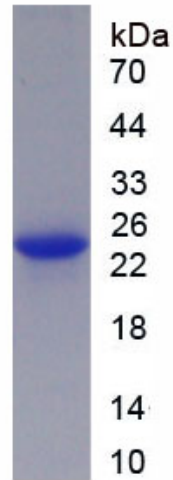
 Tel: 1-631-559-9269 1-516-512-3133

 Email: info@creative-biomart.com  Fax: 1-631-938-8127

 45-1 Ramsey Road, Shirley, NY 11967, USA

UniProt ID

Q5VV17



 Tel: 1-631-559-9269 1-516-512-3133

 Email: info@creative-biomart.com  Fax: 1-631-938-8127

 45-1 Ramsey Road, Shirley, NY 11967, USA