

Recombinant Full Length Human OTULIN Protein, His tagged

Cat. No. OTULIN-3666H Lot. No. (See product label)

SPECIFICATION

Product Overview	Recombinant full-length human OTULIN was expressed in E. coli cells using an N-terminal His tag. The OTULIN gene accession number is NM_138348.
Species	Human
Source	E.coli
ProteinLength	1-352 aa
Description	This gene encodes a member of the peptidase C65 family of ubiquitin isopeptidases. Members of this family remove ubiquitin from proteins. The encoded enzyme specifically recognizes and removes M1(Met1)-linked, or linear, ubiquitin chains from protein substrates. Linear ubiquitin chains are known to regulate the NF-kappa B signaling pathway in the context of immunity and inflammation. Mutations in this gene cause a potentially fatal autoinflammatory syndrome in human patients.
Molecular Mass	49 kDa
Purity	> 90%
Stability	One year at -70 centigrade from date of shipment.
Storage	Store product at -70 centigrade. For optimal storage, aliquot target into smaller quantities after centrifugation and store at recommended temperature. For most favorable performance, avoid repeated handling and multiple freeze/thaw cycles.

 Tel: 1-631-559-9269 1-516-512-3133

 Email: info@creative-biomart.com  Fax: 1-631-938-8127

 45-1 Ramsey Road, Shirley, NY 11967, USA

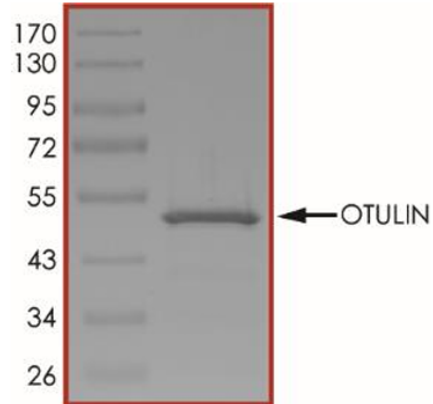
Storage Buffer	Recombinant protein stored in 50mM sodium phosphate, pH 7.0, 300mM NaCl, 150mM imidazole, 0.1mM PMSF, 0.25mM DTT, 25% glycerol.
Concentration	0.2 µg/µL
Shipping	Dry ice
GENE INFORMATION	
Gene Name	OTULIN OTU deubiquitinase with linear linkage specificity [Homo sapiens (human)]
Official Symbol	OTULIN
Synonyms	OTULIN; OTU deubiquitinase with linear linkage specificity; GUM; AIPDS; AIPDSA; IMD107; FAM105B; ubiquitin thioesterase otulin; OTU domain-containing deubiquitinase with linear linkage specificity; deubiquitinating enzyme otulin; family with sequence similarity 105, member B; ubiquitin thioesterase Gumby; EC 3.4.19.12
Gene ID	90268
mRNA Refseq	NM_138348
Protein Refseq	NP_612357
MIM	615712
UniProt ID	Q96BN8

 Tel: 1-631-559-9269 1-516-512-3133

 Email: info@creative-biomart.com  Fax: 1-631-938-8127

 45-1 Ramsey Road, Shirley, NY 11967, USA

Purity



The purity of OTULIN was determined to be > 90% by densitometry, approx. MW 49 kDa.

 Tel: 1-631-559-9269 1-516-512-3133

 Email: info@creative-biomart.com  Fax: 1-631-938-8127

 45-1 Ramsey Road, Shirley, NY 11967, USA