

# Recombinant Full Length Human OVGP1 Protein, C-Flag-tagged

**Cat. No.** OVGP1-1014HFL    **Lot. No.** (See product label)

## SPECIFICATION

<b>Product Overview</b>	Recombinant Full Length Human OVGP1 Protein, fused to Flag-tag at C-terminus, was expressed in Mammalian cells.
<b>Species</b>	Human
<b>Source</b>	Mammalian Cells
<b>Description</b>	This gene encodes a large, carbohydrate-rich, epithelial glycoprotein with numerous O-glycosylation sites located within threonine, serine, and proline-rich tandem repeats. The gene is similar to members of the mucin and the glycosyl hydrolase 18 gene families. Regulation of expression may be estrogen-dependent. Gene expression and protein secretion occur during late follicular development through early cleavage-stage embryonic development. The protein is secreted from non-ciliated oviductal epithelial cells and associates with ovulated oocytes, blastomeres, and spermatozoan acrosomal regions.
<b>Form</b>	25 mM Tris HCl, pH 7.3, 100 mM glycine, 10% glycerol.
<b>Molecular Mass</b>	75.2 kDa
<b>AA Sequence</b>	MWKLLLWVGLVVLVKHHDGAAHKLVCYFTNWAHSRPGPASILPHDLDPFLCTHLIFA FASMNNNQIVAKD LQDEKILYPEFNKCLKERNRELKTLISIGGWNFGTSRFTTMLSTF ANREKFIASVISLLRTHDFDGLDLFF LYPGLRGSPMHDRWTFLLIEELLFAFRKEALL TMRPRLLLSAAVSGVPHIVQTSYDVRFLGRLLDFINV LSYDLHGSWERFTGHNSPLF

 Tel: 1-631-559-9269    1-516-512-3133

 Email: [info@creative-biomart.com](mailto:info@creative-biomart.com)     Fax: 1-631-938-8127

 45-1 Ramsey Road, Shirley, NY 11967, USA

SLPEDPKSSAYAMNYWRKLGAPSEKLIMGIPTYGRTRFLLKASKNGLQAR AIGPASP  
 GKYTEKQEGFLAYFEICSFVWGAKKHWDYQYVPYANKGKEWVGYDNAISFSYKAWF  
 IRREHFG GAMVWTLDMDDVRGTFCTGPFPLVYVLNDILVRAEFSSTSLPQFWLSS  
 AVNSSSTDPERLAVTTAWTTD SKILPPGGEAGVTEIHGKCNMTITPRGTTVTPTKE  
 TVSLGKHTVALGEKTEITGAMTMTSVGHQSMTPG EKALTPVGHQSVTGQKTLTSV  
 GYQSVTPGEKTLTPVGHQSVTPVSHQSVSPGGTTMTPVHFQTETLRQN TVAPRRK  
 AVAREKVTVPSRNISVTPEGQTMPLRGENLTSEVGTHPRMGNLGLQMEAENRMML  
 SSSPVIQL  
 PEQTPLAFDNRFVPIYGNHSSVNSVTPQTSPLSLKKEIPENSAVDEEATRTRPLEQKL  
 ISEEDLAANDILDYKDDDDKV

<b>Purity</b>	> 80% as determined by SDS-PAGE and Coomassie blue staining.
<b>Stability</b>	Stable for 12 months from the date of receipt of the product under proper storage and handling conditions. Avoid repeated freeze-thaw cycles.
<b>Storage</b>	Store at -80 centigrade.
<b>Concentration</b>	>50 ug/mL as determined by microplate BCA method.
<b>Preparation</b>	Recombinant protein was captured through anti-DDK affinity column followed by conventional chromatography steps.
<b>Protein Families</b>	Secreted Protein
<b>Full Length</b>	Full L.

## GENE INFORMATION

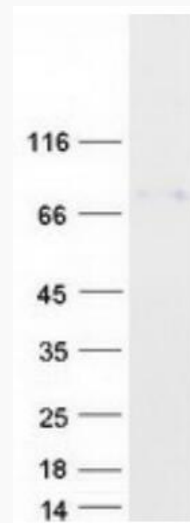
**Gene Name** [OVGP1 oviductal glycoprotein 1 \[ Homo sapiens \(human\) \]](#)

 Tel: 1-631-559-9269 1-516-512-3133

 Email: [info@creative-biomart.com](mailto:info@creative-biomart.com)  Fax: 1-631-938-8127

 45-1 Ramsey Road, Shirley, NY 11967, USA

<b>Official Symbol</b>	OVGP1
<b>Synonyms</b>	EGP; OGP; MUC9; CHIT5
<b>Gene ID</b>	5016
<b>mRNA Refseq</b>	NM_002557.4
<b>Protein Refseq</b>	NP_002548.3
<b>MIM</b>	603578
<b>UniProt ID</b>	Q12889



Coomassie blue staining of purified OVGP1 protein.

 Tel: 1-631-559-9269 1-516-512-3133

 Email: [info@creative-biomart.com](mailto:info@creative-biomart.com)  Fax: 1-631-938-8127

 45-1 Ramsey Road, Shirley, NY 11967, USA