

Recombinant Human OXLD1 Protein, Myc/DDK-tagged, C13 and N15-labeled

Cat. No. OXLD1-2639H **Lot. No.** (See product label)

SPECIFICATION

Product Overview	C17orf90 MS Standard C13 and N15-labeled recombinant protein (NP_001034931) with a C-terminal MYC/DDK tag, was expressed in HEK293 cells.
Species	Human
Source	HEK293
Description	OXLD1 (Oxidoreductase Like Domain Containing 1) is a Protein Coding gene. Diseases associated with OXLD1 include Mixed Receptive-Expressive Language Disorder and Baraitser-Winter Syndrome.
Molecular Mass	15.9 kDa
AA Sequence	MLLRRVVEGGRAVAAAVRGSGARRFSSPDCCQRLPGGGSFLQRHHPGAQAPDGR RKFGTDHVEVGSQAGADGTRPPKASLPPELQPPTNCCMSGCPNCVWVEYADRLL QHFQDGGGERALAALEEHVADENLKAFLRMEIRLHTRCGGTRTRPLEQKLISEEDLAA NDILDYKDDDDKV
Purity	> 80% as determined by SDS-PAGE and Coomassie blue staining
Stability	Stable for 3 months from receipt of products under proper storage and handling conditions.
Storage	Store at -80 centigrade. Avoid repeated freeze-thaw cycles.

 Tel: 1-631-559-9269 1-516-512-3133

 Email: info@creative-biomart.com  Fax: 1-631-938-8127

 45-1 Ramsey Road, Shirley, NY 11967, USA

Concentration 50 µg/mL as determined by BCA

Storage Buffer 100 mM glycine, 25 mM Tris-HCl, pH 7.3.

GENE INFORMATION

Gene Name OXLD1 oxidoreductase like domain containing 1 [Homo sapiens (human)]

Official Symbol OXLD1

Synonyms OXLD1; oxidoreductase like domain containing 1; C17orf90; oxidoreductase-like domain-containing protein 1

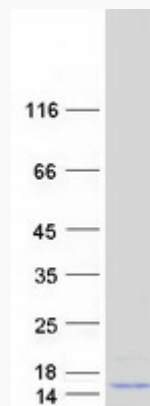
Gene ID 339229

mRNA Refseq NM_001039842

Protein Refseq NP_001034931

UniProt ID Q5BKU9

SDS-PAGE



 Tel: 1-631-559-9269 1-516-512-3133

 Email: info@creative-biomart.com  Fax: 1-631-938-8127

 45-1 Ramsey Road, Shirley, NY 11967, USA