

Recombinant Mouse OcIn Protein, His-tagged

Cat. No. OcIn-1882M **Lot. No.** (See product label)

SPECIFICATION

Product Overview	Recombinant Mouse OcIn Protein (Lys264-Pro521) with N-His tag was expressed in E. coli.
Species	Mouse
Source	E.coli
ProteinLength	Lys264-Pro521
Description	Predicted to enable protein domain specific binding activity. Involved in negative regulation of gene expression and tight junction organization. Located in several cellular components, including apical plasma membrane; apicolateral plasma membrane; and bicellular tight junction. Is expressed in several structures, including alimentary system; brain; genitourinary system; respiratory system; and sensory organ. Human ortholog(s) of this gene implicated in Crohn's disease and pseudo-TORCH syndrome 1. Orthologous to human OCLN (occludin).
Form	Freeze-dried powder
Molecular Mass	Predicted Molecular Mass: 33.8 kDa
Purity	> 97%
Applications	Positive Control; Immunogen; SDS-PAGE; WB.

 Tel: 1-631-559-9269 1-516-512-3133

 Email: info@creative-biomart.com  Fax: 1-631-938-8127

 45-1 Ramsey Road, Shirley, NY 11967, USA

Stability	The thermal stability is described by the loss rate. The loss rate was determined by accelerated thermal degradation test, that is, incubate the protein at 37 centigrade for 48h, and no obvious degradation and precipitation were observed. The loss rate is less than 5% within the expiration date under appropriate storage condition.
Storage	Avoid repeated freeze/thaw cycles. Store at 2-8 centigrade for one month. Aliquot and store at -80 centigrade for 12 months.
Storage Buffer	PBS, pH7.4, containing 0.01% SKL, 1mM DTT, 5% Trehalose and Proclin300.
Reconstitution	Reconstitute in 10mM PBS (pH7.4) to a concentration of 0.1-1.0 mg/mL. Do not vortex.

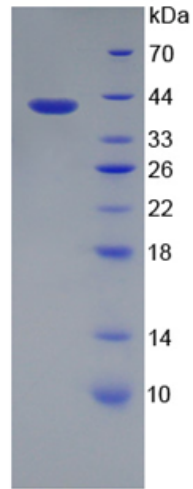
GENE INFORMATION

Gene Name	Ocln occludin [<i>Mus musculus</i> (house mouse)]
Official Symbol	Ocln
Synonyms	OCLN; occludin; Ocl; AI503564;
Gene ID	18260
mRNA Refseq	NM_008756
Protein Refseq	NP_032782
UniProt ID	Q61146

 Tel: 1-631-559-9269 1-516-512-3133

 Email: info@creative-biomart.com  Fax: 1-631-938-8127

 45-1 Ramsey Road, Shirley, NY 11967, USA



Tel: 1-631-559-9269 1-516-512-3133

Email: info@creative-biomart.com Fax: 1-631-938-8127

45-1 Ramsey Road, Shirley, NY 11967, USA