

## Recombinant Rat Odc1 Protein, His-tagged

**Cat. No.** Odc1-1883R    **Lot. No.** (See product label)

### SPECIFICATION

<b>Product Overview</b>	Recombinant Rat Odc1 Protein (Met1-Val461) with N-His tag was expressed in E. coli.
<b>Species</b>	Rat
<b>Source</b>	E.coli
<b>ProteinLength</b>	Met1-Val461
<b>Description</b>	Enables ornithine decarboxylase activity. Involved in putrescine biosynthetic process. Located in perinuclear region of cytoplasm. Orthologous to human ODC1 (ornithine decarboxylase 1).
<b>Form</b>	Freeze-dried powder
<b>Molecular Mass</b>	Predicted Molecular Mass: 54.7 kDa Accurate Molecular Mass: 55 kDa
<b>Purity</b>	> 97%
<b>Applications</b>	Cell culture; Activity Assays.
<b>Stability</b>	The thermal stability is described by the loss rate. The loss rate was determined by accelerated thermal degradation test, that is, incubate the protein at 37 centigrade for 48h, and no obvious degradation and precipitation were observed. The loss rate is

 Tel: 1-631-559-9269    1-516-512-3133

 Email: [info@creative-biomart.com](mailto:info@creative-biomart.com)     Fax: 1-631-938-8127

 45-1 Ramsey Road, Shirley, NY 11967, USA

less than 5% within the expiration date under appropriate storage condition.

**Storage**

Avoid repeated freeze/thaw cycles. Store at 2-8 centigrade for one month. Aliquot and store at -80 centigrade for 12 months.

**Storage Buffer**

20mM Tris, 150mM NaCl, pH8.0, containing 1mM EDTA, 1mM DTT, 0.01% SKL, 5% Trehalose and Proclin300.

**Reconstitution**

Reconstitute in 20mM Tris, 150mM NaCl (pH8.0) to a concentration of 0.1-1.0 mg/mL. Do not vortex.

## GENE INFORMATION

**Gene Name**

Odc1 ornithine decarboxylase 1 [ *Rattus norvegicus* (Norway rat) ]

**Official Symbol**

Odc1

**Synonyms**

Odc1; ornithine decarboxylase 1; Odc; ornithine decarboxylase; Ornithine decarboxylase; EC 4.1.1.17

**Gene ID**

24609

**mRNA Refseq**

NM\_001302083

**Protein Refseq**

NP\_001289012

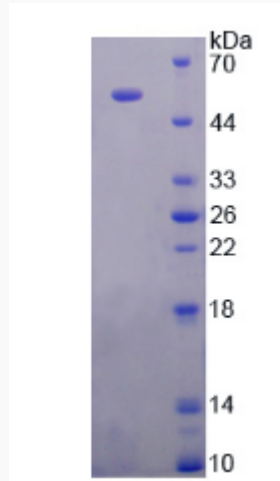
**UniProt ID**

P09057

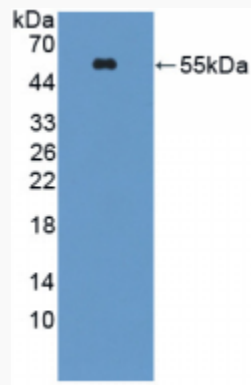
 Tel: 1-631-559-9269 1-516-512-3133

 Email: [info@creative-biomart.com](mailto:info@creative-biomart.com)  Fax: 1-631-938-8127

 45-1 Ramsey Road, Shirley, NY 11967, USA



WB

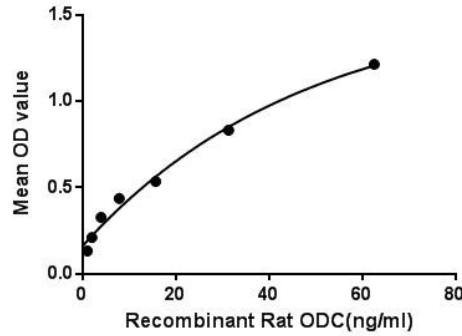


 Tel: 1-631-559-9269 1-516-512-3133

 Email: [info@creative-biomart.com](mailto:info@creative-biomart.com)  Fax: 1-631-938-8127

 45-1 Ramsey Road, Shirley, NY 11967, USA

**Bioactivity**



The binding activity of ODC with TK1.

 Tel: 1-631-559-9269 1-516-512-3133

 Email: [info@creative-biomart.com](mailto:info@creative-biomart.com)  Fax: 1-631-938-8127

 45-1 Ramsey Road, Shirley, NY 11967, USA