

Recombinant Rat Olfm3 protein, His-tagged

Cat. No. Olfm3-3432R **Lot. No.** (See product label)

SPECIFICATION

Product Overview	Recombinant Rat Olfm3 protein(P63057)(24-478aa), fused with C-terminal His tag, was expressed in HEK293.
Species	Rat
Source	HEK293
ProteinLength	24-478aa
Tag	C-His
Form	If the delivery form is liquid, the default storage buffer is Tris/PBS-based buffer, 5%-50% glycerol. If the delivery form is lyophilized powder, the buffer before lyophilization is Tris/PBS-based buffer, 6% Trehalose, pH 8.0.
Molecular Mass	56.0 kDa
Purity	Greater than 85% as determined by SDS-PAGE.
Storage	Store at -20°C/-80°C upon receipt, aliquoting is necessary for mutiple use. Avoid repeated freeze-thaw cycles.
Reconstitution	We recommend that this vial be briefly centrifuged prior to opening to bring the contents to the bottom. Please reconstitute protein in deionized sterile water to a concentration of 0.1-1.0 mg/mL. We recommend to add 5-50% of glycerol (final

 Tel: 1-631-559-9269 1-516-512-3133

 Email: info@creative-biomart.com  Fax: 1-631-938-8127

 45-1 Ramsey Road, Shirley, NY 11967, USA

concentration) and aliquot for long-term storage at -20°C/-80°C.

AA Sequence

QTLPSLVGLNTRRLSAPDTLTQISPKEGWQVYSSAQDPDGRICITVVAPEQNLCSSR
 DAKSRQLRQLLEKVQNMSQSIEVLNLRTRQDFQYVLKMETQMKGLKAKFRQIEDDR
 KTLMTKHFQELKEKMDPELLIPVLEQYKTDACLITQFKEEIRNLSSVLTGIQEEIGAYD
 YEELHQRVLSLETRLRDCMKKLTGKMLKITGPITVKTSGTRFGAWMTDPLASEKNN
 RVWYMDSYTNKIVREYKSIADFSVGAESRTYNLPFKWAGTNHVVYNGSLYFNKYQ
 SNIIIKYSFDLGRVLAQRSLEYAGFHNVPYTWGGFSDIDLMADEIGLWAVYATNQNA
 GNIVISQLNQDTLEVMKSWSTGYPKRSAGESFMICGTLYVTNSHLTGAKVYYSYSTK
 TSTYEYTDIPFHNQYFHISMLDYNARDRALYAWNNGHQVLFNVTLFHHIKTEDDT

GENE INFORMATION

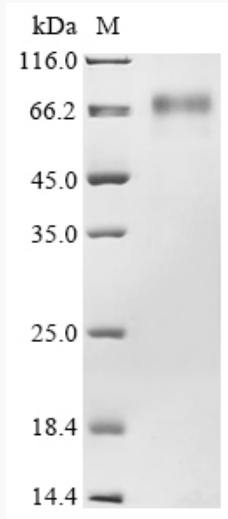
Gene Name	Olfm3 olfactomedin 3 [<i>Rattus norvegicus</i>]
Official Symbol	Olfm3
Synonyms	OLFM3; olfactomedin 3; noelin-3; optimedin; olfactomedin-3;
Gene ID	252920
mRNA Refseq	NM_145777
Protein Refseq	NP_665720

 Tel: 1-631-559-9269 1-516-512-3133

 Email: info@creative-biomart.com  Fax: 1-631-938-8127

 45-1 Ramsey Road, Shirley, NY 11967, USA

SDS-PAGE



 Tel: 1-631-559-9269 1-516-512-3133

 Email: info@creative-biomart.com  Fax: 1-631-938-8127

 45-1 Ramsey Road, Shirley, NY 11967, USA