

Recombinant Mouse Olfm4 protein(19-505aa), His-tagged

Cat. No. Olfm4-9270M Lot. No. (See product label)

SPECIFICATION

Product Overview	Recombinant Mouse Olfm4 protein(Q3UZZ4)(19-505aa), fused with N-terminal His tag, was expressed in E.coli.
Species	Mouse
Source	E.coli
ProteinLength	19-505aa
Form	If the delivery form is liquid, the default storage buffer is Tris/PBS-based buffer, 5%-50% glycerol. If the delivery form is lyophilized powder, the buffer before lyophilization is Tris/PBS-based buffer, 6% Trehalose, pH 8.0.
Molecular Mass	58.1 kDa
Purity	Greater than 85% as determined by SDS-PAGE.
Storage	Store at -20°C/-80°C upon receipt, aliquoting is necessary for mutiple use. Avoid repeated freeze-thaw cycles.
Reconstitution	We recommend that this vial be briefly centrifuged prior to opening to bring the contents to the bottom. Please reconstitute protein in deionized sterile water to a concentration of 0.1-1.0 mg/mL. We recommend to add 5-50% of glycerol (final concentration) and aliquot for long-term storage at -20°C/-80°C.

 Tel: 1-631-559-9269 1-516-512-3133

 Email: info@creative-biomart.com  Fax: 1-631-938-8127

 45-1 Ramsey Road, Shirley, NY 11967, USA



AA Sequence

SRTTLTSAHSRELTTPPTSPQATAAWLPPGGTSWAEGGTVSQPLSNFTGSDSHGT
CQCSVSLPDTAFPADRVERLEYTAHILSQKFEREFKVKKEYVQLISVYEKRLLNLTVR
VEVMEKDSISYTELDFELIKLEVKEMQKLVQLKKNFVGSTHIIDMLEVEIRNMTLLVE
KLESLDQNNVLSIRRQILALKTKLKECEASKSDLVPATPPPPAPGSCSHGGVVISAP
SVIQLNWLGFYSYKYGAWGRDYSPQHPERTLYWVAPLNTDARALEYYRLYDSLNDLL
IYSHFRDYRIRYGGGGTVAFNNNLYVNWYNGGNIKINLTTNVVDVNRPLPLAAYN
NRFSYANVNWQDIDLAVDEQALWAIYATEASTGNIVISKLNDDTTLEVISTWVTKQYKP
SVSNAFMVCGVLYATR TLNTKTEEIFYYYDTNTEREGLGITMRKMQERIQSINYHPF
DQKLYVYNDGYLLNYDLVFLQTPRQPV

GENE INFORMATION

Gene Name [Olfm4 olfactomedin 4 \[Mus musculus \]](#)

Official Symbol [Olfm4](#)

Synonyms OLFM4; olfactomedin 4; GC1; OlfD; pPD4; GW112; Gm296; Gm913;

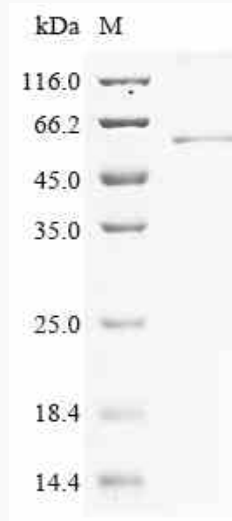
Gene ID [239192](#)

Tel: 1-631-559-9269 1-516-512-3133

Email: info@creative-biomart.com Fax: 1-631-938-8127

45-1 Ramsey Road, Shirley, NY 11967, USA

SDS-PAGE



 Tel: 1-631-559-9269 1-516-512-3133

 Email: info@creative-biomart.com  Fax: 1-631-938-8127

 45-1 Ramsey Road, Shirley, NY 11967, USA