

Recombinant Rhesus Monkey OSM Protein, His tagged

Cat. No. Osm-3256R **Lot. No.** (See product label)

SPECIFICATION

Product Overview	Recombinant Rhesus Monkey OSM Protein with His tag was expressed in HEK293.
Species	Rhesus Monkey
Source	HEK293
ProteinLength	22-252 aa
Storage	Store it under sterile conditions at -20 to -80 centigrade. It is recommended that the protein be aliquoted for optimal storage. Avoid repeated freeze-thaw cycles.
Storage Buffer	Sterile 20mM Tris, 0.5M NaCl, 50% Glycerol, pH8.0
AA Sequence	MASMAAMGSCSKEYRMLLGQLQKQTDLMQDTSRLLDPYIRIQGLDIPKLREHCRES PGAFPSEETLRGLGRRGFLQTLNATLGRVLHRLADLEQHLPKAQDLERSGLNIEDLE KLQMARPVNLGLRNNVYCMAQLLDNSDMTEPTKAGRGTPQPPTPTPTSDVFQRKL EGCSFLRGYHRFMHSVGRVFSKWGESPNRSRRHSPHQALRKGVRRTSPSRKGNR LMPRGQLPRHHHHHHHHH
Endotoxin	<1 EU/μg by LAL
Purity	> 90% by SDS-PAGE
Concentration	0.6 mg/mL by BCA

 Tel: 1-631-559-9269 1-516-512-3133

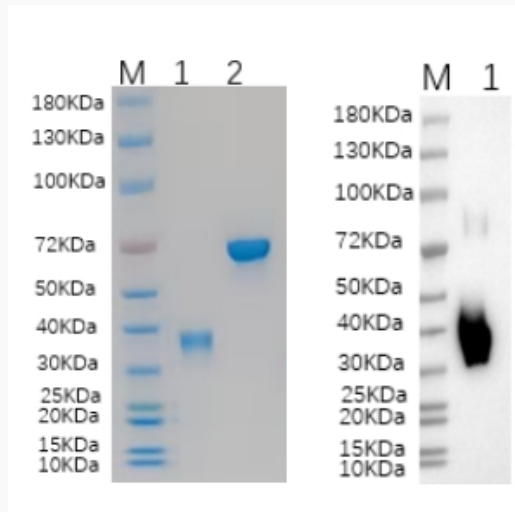
 Email: info@creative-biomart.com  Fax: 1-631-938-8127

 45-1 Ramsey Road, Shirley, NY 11967, USA

GENE INFORMATION

Official Symbol	OSM
Synonyms	OSM; oncostatin M; oncostatin-M
Gene ID	717994
mRNA Refseq	NM_001194474
Protein Refseq	NP_001181403
UniProt ID	F7GF43

SDS-PAGE and WB



Reducing 4%-20% SDS-PAGE (CBB stained) and WB (Anti-His Mouse Monoclonal antibody) analysis profiles of purified Osm. 1. Osm: 1 μ g 2. BSA: 1 μ g

Tel: 1-631-559-9269 1-516-512-3133

Email: info@creative-biomart.com Fax: 1-631-938-8127

45-1 Ramsey Road, Shirley, NY 11967, USA