

Recombinant Mouse Otop1 Full Length Transmembrane protein, His-tagged

Cat. No. Otop1-4452M **Lot. No.** (See product label)

SPECIFICATION

Product Overview	Recombinant Mouse Otop1 protein(Q80VM9)(1-600aa), fused to N-terminal His tag, was expressed in E. coli.
Species	Mouse
Source	E.coli
ProteinLength	1-600aa
Form	<p>If the delivery form is liquid, the default storage buffer is Tris/PBS-based buffer, 5%-50% glycerol.</p> <p>If the delivery form is lyophilized powder, the buffer before lyophilization is Tris/PBS-based buffer, 6% Trehalose, pH 8.0.</p>
Molecular Mass	68.6 kDa
AA Sequence	<p>MPGGPGAPSSPAASSGSSRAAPSGIAACPLSPPLARGSPQASGPRRGASVPQKL AETLSSQYGLNVFVAGLLFLLAWAVHATGVGKSDLLCVLTALMLLQLLWMLWYVGR SYMQRRLIRPKDTHAGARWLRGSITLFAFITVVLGCLKVAYFIGFSECLSATEGVFPV THAVHTLLQVYFLWGHAKDIIMSFKTLERFGVIHSVFTNLLLWANSVLNESKHQLNEH KERLITLGFGNITIVLDDHTPQCNCCTPPALCSALSHGIYYLYPFNIEYQILASTMLYVLW KNIGRRVDSSQHQMQRFDGVLVGSVLGLTVLAATIAVVVVYMIHIGRSKSKSESA LIMFYLYAITVLLLGAAGLVGSWIYRVDEKSLDESKNPARKLDVDLLVATGSGSWLL SWGSIACAEIETPPYTWYNLPYSVLVIVEKYVQNIFIIESVHLEPEGVPEDVRTLRV</p>

 Tel: 1-631-559-9269 1-516-512-3133

 Email: info@creative-biomart.com  Fax: 1-631-938-8127

 45-1 Ramsey Road, Shirley, NY 11967, USA

VTVCSSEAAALAASTLGSQGMADGSPAVNGNLCLQQRCKEDQESGWEGATGT
 TRCLDFLQGGMKRLLRNITAFRLFCLNISLWIPPAFGCRPEYDNGLEEIVFGFEPWIIV
 VNLAMPFSIFYRMHAAAALFEVYCKI

Purity Greater than 85% as determined by SDS-PAGE.

Storage Store at -20°C/-80°C upon receipt, aliquoting is necessary for multiple use. Avoid repeated freeze-thaw cycles.

Reconstitution Please reconstitute protein in deionized sterile water to a concentration of 0.1-1.0 mg/mL. We recommend to add 5-50% of glycerol (final concentration) and aliquot for long-term storage at -20°C/-80°C. Our default final concentration of glycerol is 50%.

GENE INFORMATION

Gene Name [Otop1 otopetrin 1 \[Mus musculus \]](#)

Official Symbol [Otop1](#)

Synonyms OTOP1; otopetrin 1; otopetrin-1; tilted; tlt; Otp1; A530025J20Rik;

Gene ID [21906](#)

mRNA Refseq [NM_172709](#)

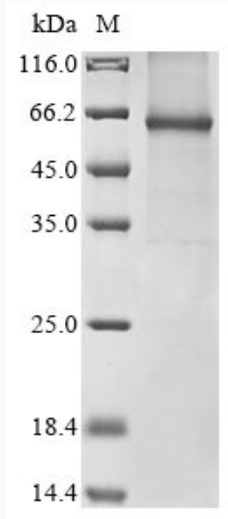
Protein Refseq [NP_766297](#)

 Tel: 1-631-559-9269 1-516-512-3133

 Email: info@creative-biomart.com  Fax: 1-631-938-8127

 45-1 Ramsey Road, Shirley, NY 11967, USA

SDS-PAGE



 Tel: 1-631-559-9269 1-516-512-3133

 Email: info@creative-biomart.com  Fax: 1-631-938-8127

 45-1 Ramsey Road, Shirley, NY 11967, USA