

Recombinant Human P2RX2 Protein, Myc/DDK-tagged, C13 and N15-labeled

Cat. No. P2RX2-5263H Lot. No. (See product label)

SPECIFICATION

Product Overview

P2RX2 MS Standard C13 and N15-labeled recombinant protein (NP_733782) with a C-terminal MYC/DDK tag, was expressed in HEK293 cells.

Species

Human

Source

HEK293

Description

The product of this gene belongs to the family of purinoceptors for ATP. This receptor functions as a ligand-gated ion channel. Binding to ATP mediates synaptic transmission between neurons and from neurons to smooth muscle. Multiple transcript variants encoding distinct isoforms have been identified for this gene.

Molecular Mass

51.6 kDa

AA Sequence

```
MAAAQPKYPAGATARRLARGCWSALWDYETPKVIVVRNRRLGVLYRAVQLLILLYFV
WYVFIVQKSYQESETGPESSIITKVKGITTSEHKVVDVEEYVKPPEGGSVFSIITRVEA
THSQTQGTCPESIRVHNATCLSDADCVAGELDMLGNLRTGRCVPYYQGPKTCE
VFGWCPVEDGASVSQFLGTMAPNFTILIKNSIHYPKFHFHFKGNIADRTDGYLKRCTF
HEADLYCPIFKLGFIVEKAGESFTELAHKGGVIGVIINWDCDLDPASECNPKYSFR
RLDPKHVPASSGYNFRFAKYKINGTTTTRTLIKAYGIRIDVIVHGQAGKFSLIPTIINLAT
ALTSVGVGSFLCDWILLTFMNKNKVYSHKKFDKVCTPSHPSGSGWPVTLARVLGQAP
PEPGHRSEDQHPSPPSGQEGQQAECGPAFPPLRPCISAPSEQMVDTPASEPAQ
ASTPTDPKGLAQLTRTRPLEQKLISEEDLAANDILDYKDDDDKV
```

 Tel: 1-631-559-9269 1-516-512-3133

 Email: info@creative-biomart.com  Fax: 1-631-938-8127

 45-1 Ramsey Road, Shirley, NY 11967, USA

Purity	> 80% as determined by SDS-PAGE and Coomassie blue staining
Stability	Stable for 3 months from receipt of products under proper storage and handling conditions.
Storage	Store at -80 centigrade. Avoid repeated freeze-thaw cycles.
Concentration	50 µg/mL as determined by BCA
Storage Buffer	100 mM glycine, 25 mM Tris-HCl, pH 7.3.

GENE INFORMATION

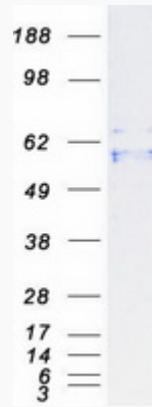
Gene Name	P2RX2 purinergic receptor P2X 2 [Homo sapiens (human)]
Official Symbol	P2RX2
Synonyms	P2RX2; purinergic receptor P2X, ligand-gated ion channel, 2; P2X purinoceptor 2; P2X2; ATP receptor; P2X Receptor, subunit 2; MGC129601;
Gene ID	22953
mRNA Refseq	NM_170682
Protein Refseq	NP_733782
MIM	600844
UniProt ID	Q9UBL9

 Tel: 1-631-559-9269 1-516-512-3133

 Email: info@creative-biomart.com  Fax: 1-631-938-8127

 45-1 Ramsey Road, Shirley, NY 11967, USA

SDS-PAGE



 Tel: 1-631-559-9269 1-516-512-3133

 Email: info@creative-biomart.com  Fax: 1-631-938-8127

 45-1 Ramsey Road, Shirley, NY 11967, USA