

Recombinant Human P2RY12 Full Length Transmembrane protein, His-tagged

Cat. No. P2RY12-2459H **Lot. No.** (See product label)

SPECIFICATION

Product Overview	Recombinant Human P2RY12 protein(Q9H244)(1-342aa), fused to N-terminal His tag, was expressed in E. coli.
Species	Human
Source	E.coli
ProteinLength	1-342aa
Form	If the delivery form is liquid, the default storage buffer is Tris/PBS-based buffer, 5%-50% glycerol. If the delivery form is lyophilized powder, the buffer before lyophilization is Tris/PBS-based buffer, 6% Trehalose, pH 8.0.
Molecular Mass	42.2 kDa
AA Sequence	MQAVDNLTSAPGNTSLCTRDKITQVLFPLLYTVLFFVGLITNGLAMRIFFQIRSKSNF IIFLKNTVISDLLMILTFPFKILSDAKLGTGPLRTFVCQVTSVIFYFTMYISISFLGLITDR YQKTRRPFKTSNPKNLLGAKILSVVIWAFMFLSLPNMILTNRQPRDKNVKKCSFLKS EFGLVWHEIVNYICQVIFWINFLIVIVCYTLITKELYRSYVTRTRGVGKVPKRVNVKVFII IAVFFICFVPFHFARIPYTLSQTRDVFDCENTAENTLFYVKESTLWLTSLNACLDPFIYFFL CKSFRNSLISMLKCPNSATSLSQDNRKKEQDGGDPNEETPM
Purity	Greater than 85% as determined by SDS-PAGE.

 Tel: 1-631-559-9269 1-516-512-3133

 Email: info@creative-biomart.com  Fax: 1-631-938-8127

 45-1 Ramsey Road, Shirley, NY 11967, USA

Storage Store at -20°C/-80°C upon receipt, aliquoting is necessary for mutiple use. Avoid repeated freeze-thaw cycles.

Reconstitution Please reconstitute protein in deionized sterile water to a concentration of 0.1-1.0 mg/mL. We recommend to add 5-50% of glycerol (final concentration) and aliquot for long-term storage at -20°C/-80°C. Our default final concentration of glycerol is 50%.

GENE INFORMATION

Gene Name P2RY12 purinergic receptor P2Y, G-protein coupled, 12 [Homo sapiens]

Official Symbol P2RY12

Synonyms P2RY12; purinergic receptor P2Y, G-protein coupled, 12; P2Y purinoceptor 12; HORK3; P2Y12; SP1999; ADP-glucose receptor; purinergic receptor P2RY12; P2Y12 platelet ADP receptor; Gi-coupled ADP receptor HORK3; G-protein coupled receptor SP1999; putative G-protein coupled receptor; ADPG-R; BDPLT8; P2T(AC); P2Y(AC); P2Y(ADP); P2Y(cyc);

Gene ID 64805

mRNA Refseq NM_022788

Protein Refseq NP_073625

MIM 600515

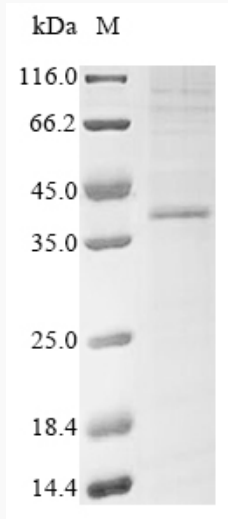
UniProt ID Q9H244

 Tel: 1-631-559-9269 1-516-512-3133

 Email: info@creative-biomart.com  Fax: 1-631-938-8127

 45-1 Ramsey Road, Shirley, NY 11967, USA

SDS-PAGE



 Tel: 1-631-559-9269 1-516-512-3133

 Email: info@creative-biomart.com  Fax: 1-631-938-8127

 45-1 Ramsey Road, Shirley, NY 11967, USA