

Recombinant Full Length Human P2RY12 Protein, C-Flag-tagged

Cat. No. P2RY12-590HFL **Lot. No.** (See product label)

SPECIFICATION

Product Overview	Recombinant Full Length Human P2RY12 Protein, fused to Flag-tag at C-terminus, was expressed in Mammalian cells.
Species	Human
Source	Mammalian Cells
Description	The product of this gene belongs to the family of G-protein coupled receptors. This family has several receptor subtypes with different pharmacological selectivity, which overlaps in some cases, for various adenosine and uridine nucleotides. This receptor is involved in platelet aggregation, and is a potential target for the treatment of thromboembolisms and other clotting disorders. Mutations in this gene are implicated in bleeding disorder, platelet type 8 (BDPLT8). Alternative splicing results in multiple transcript variants of this gene.
Form	25 mM Tris HCl, pH 7.3, 100 mM glycine, 10% glycerol.
Molecular Mass	39.3 kDa
AA Sequence	MQAVDNLTSAPGNTSLCTRDKYKITQVLFPLLYTVLFFVGLITNGLAMRIFFQIRSKSNF IIFLKNTVISD LLMILTFPFKILSDAKLGTGPLRTFVCQVTSVIFYFTMYISISFLGLITIDR YQKTRPFKTSNPKNLLG AKILSVVIWAFMFLLSLPNMILTNRQPRDKNVKCKSFLKS EFGLVWHEIVNYICQVIFWINFLIVIVCYT LITKELYRSYVRTRGVGKVPKKNVNVKVI IIAVFFICFVPPHFARIPYTLSQTRDVFDC TAENTLIFYVK

 Tel: 1-631-559-9269 1-516-512-3133

 Email: info@creative-biomart.com  Fax: 1-631-938-8127

 45-1 Ramsey Road, Shirley, NY 11967, USA

ESTLWLTSLNACLDPFIYFFLCKSFRNSLISMLKCPNSATSLSQDNRKKEQDGGDPN
EETPMTRTRPLEQKLISEEDLAANDILDYKDDDDKV

Purity	> 80% as determined by SDS-PAGE and Coomassie blue staining.
Stability	Stable for 12 months from the date of receipt of the product under proper storage and handling conditions. Avoid repeated freeze-thaw cycles.
Storage	Store at -80 centigrade.
Concentration	>50 ug/mL as determined by microplate BCA method.
Preparation	Recombinant protein was captured through anti-DDK affinity column followed by conventional chromatography steps.
Protein Families	Druggable Genome, GPCR, Transmembrane
Full Length	Full L.

GENE INFORMATION

Gene Name	P2RY12 purinergic receptor P2Y12 [Homo sapiens (human)]
Official Symbol	P2RY12
Synonyms	HORK3; P2Y12; ADPG-R; BDPLT8; SP1999; P2T(AC); P2Y(AC); P2Y(12)R; P2Y(ADP); P2Y(cyc)
Gene ID	64805
mRNA Refseq	NM_022788.5

 Tel: 1-631-559-9269 1-516-512-3133

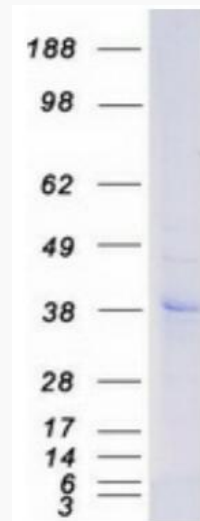
 Email: info@creative-biomart.com  Fax: 1-631-938-8127

 45-1 Ramsey Road, Shirley, NY 11967, USA

Protein Refseq NP_073625.1

MIM 600515

UniProt ID Q9H244



Coomassie blue staining of purified P2RY12 protein.

 Tel: 1-631-559-9269 1-516-512-3133

 Email: info@creative-biomart.com  Fax: 1-631-938-8127

 45-1 Ramsey Road, Shirley, NY 11967, USA