

Recombinant Mouse P2ry12 Full Length Transmembrane protein, His-tagged

Cat. No. P2ry12-9278M Lot. No. (See product label)

SPECIFICATION

Product Overview	Recombinant Mouse P2ry12 protein(Q9CPV9)(1-347aa), fused with N-terminal His tag, was expressed in in vitro E. coli expression system.
Species	Mouse
Source	E.coli
ProteinLength	1-347aa
Form	If the delivery form is liquid, the default storage buffer is Tris/PBS-based buffer, 5%-50% glycerol. If the delivery form is lyophilized powder, the buffer before lyophilization is Tris/PBS-based buffer, 6% Trehalose, pH 8.0.
Molecular Mass	45.5 kDa
AA Sequence	MDVPGVNTTSANTTFSPGTSTLCVRDYKITQVLFPLLYTVLFFAGLITNSLAMRIFFQI RSKSNFIIFLKNVISDLLMILTFPFKILSDAKLGAGPLRTLVCQVTSVTFYFTMYISISFL GLITIDRYLKTRPFKTSSPSNLLGAKILSVVIWAFMFLISLPNMILNRRPKDKDVTKC SFLKSEFGLVWHEIVNYICQVIFWINFLIVIVCYSLITKELYRSYVRTRGSAKVPKKKVN VKVFIIIAVFFICFVPPHFARIPYTLSQTRAVFDCAENTLFYVKESTLWLTSLNACLDP FIYFFLCKSFRNSLTSMRLCSNSTSTSGTNKKKGQEGGEPSEETPM
Purity	Greater than 85% as determined by SDS-PAGE.

 Tel: 1-631-559-9269 1-516-512-3133

 Email: info@creative-biomart.com  Fax: 1-631-938-8127

 45-1 Ramsey Road, Shirley, NY 11967, USA



Storage	Store at -20°C/-80°C upon receipt, aliquoting is necessary for mutiple use. Avoid repeated freeze-thaw cycles.
Reconstitution	Please reconstitute protein in deionized sterile water to a concentration of 0.1-1.0 mg/mL. We recommend to add 5-50% of glycerol (final concentration) and aliquot for long-term storage at -20°C/-80°C.

GENE INFORMATION

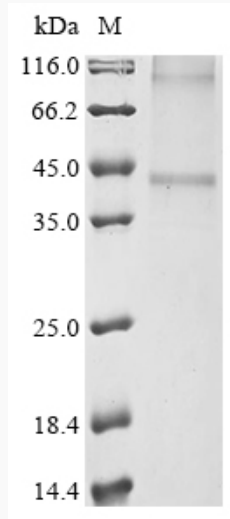
Gene Name	P2ry12 purinergic receptor P2Y, G-protein coupled 12 [Mus musculus]
Official Symbol	P2ry12
Synonyms	P2RY12; purinergic receptor P2Y, G-protein coupled 12; P2Y purinoceptor 12; P2Y12; 2900079B22Rik; 4921504D23Rik;
Gene ID	70839
mRNA Refseq	NM_027571
Protein Refseq	NP_081847

Tel: 1-631-559-9269 1-516-512-3133

Email: info@creative-biomart.com Fax: 1-631-938-8127

45-1 Ramsey Road, Shirley, NY 11967, USA

SDS-PAGE



 Tel: 1-631-559-9269 1-516-512-3133

 Email: info@creative-biomart.com  Fax: 1-631-938-8127

 45-1 Ramsey Road, Shirley, NY 11967, USA