

Recombinant Human P4HB Protein (Phe216-Gly465), N-GST tagged

Cat. No. P4HB-4782H Lot. No. (See product label)

SPECIFICATION

Product Overview	Recombinant human P4HB (Phe216-Gly465) fused with the N-GST tag was expressed in E. coli.
Species	Human
Source	E.coli
ProteinLength	Phe216-Gly465
Form	Lyophilized powder/frozen liquid
Molecular Mass	55.68 kDa
Purity	>90% as determined by SDS-PAGE.
Notes	For research use only.
Storage	Use a manual defrost freezer and avoid repeated freeze thaw cycles. Store at 2 to 8 centigrade for one week. Store at -20 to -80 centigrade for twelve months from the date of receipt.
Storage Buffer	0.01M PBS, pH 7.4, 0.02% NLS
Reconstitution	Reconstitute in sterile water for a stock solution.

 Tel: 1-631-559-9269 1-516-512-3133

 Email: info@creative-biomart.com  Fax: 1-631-938-8127

 45-1 Ramsey Road, Shirley, NY 11967, USA

Shipping They are shipped out with dry ice/blue ice unless customers require otherwise.

GENE INFORMATION

Gene Name P4HB prolyl 4-hydroxylase, beta polypeptide [Homo sapiens (human)]

Official Symbol P4HB

Synonyms

P4HB; prolyl 4-hydroxylase, beta polypeptide; ERBA2L, PO4DB, procollagen proline, 2 oxoglutarate 4 dioxygenase (proline 4 hydroxylase), beta polypeptide, procollagen proline, 2 oxoglutarate 4 dioxygenase (proline 4 hydroxylase), beta polypeptide (protein disulfide isomerase associated 1), procollagen proline, 2 oxoglutarate 4 dioxygenase (proline 4 hydroxylase), beta polypeptide (protein disulfide isomerase; thyroid hormone binding protein p55); protein disulfide-isomerase; collagen prolyl 4 hydroxylase beta; DSI; GIT; P4Hbeta; PDI; PDIA1; PO4HB; PROHB; protein disulfide isomerase family A; member 1; protein disulfide isomerase associated 1; p55; protocollagen hydroxylase; prolyl 4-hydroxylase subunit beta; collagen prolyl 4-hydroxylase beta; thyroid hormone-binding protein p55; glutathione-insulin transhydrogenase; cellular thyroid hormone-binding protein; protein disulfide isomerase-associated 1; protein disulfide isomerase/oxidoreductase; protein disulfide isomerase family A, member 1; procollagen-proline, 2-oxoglutarate 4-dioxygenase (proline 4-hydroxylase), beta polypeptide; PHDB; PO4DB; ERBA2L;

Gene ID 5034

mRNA Refseq NM_000918

Protein Refseq NP_000909

MIM 176790

 Tel: 1-631-559-9269 1-516-512-3133

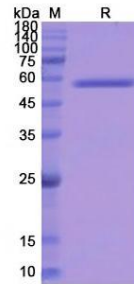
 Email: info@creative-biomart.com  Fax: 1-631-938-8127

 45-1 Ramsey Road, Shirley, NY 11967, USA

UniProt ID

P07237

SDS-PAGE



 Tel: 1-631-559-9269 1-516-512-3133

 Email: info@creative-biomart.com  Fax: 1-631-938-8127

 45-1 Ramsey Road, Shirley, NY 11967, USA