

Recombinant Human PA2G4 protein, His-tagged

Cat. No. PA2G4-1501H Lot. No. (See product label)

SPECIFICATION

Product Overview	Recombinant Human PA2G4 protein(1-394 aa), fused with N-terminal His tag, was expressed in E. coli.
Species	Human
Source	E.coli
ProteinLength	1-394 aa
Form	The purified protein was Lyophilized from sterile PBS (58mM Na ₂ HPO ₄ , 17mM NaH ₂ PO ₄ , 68mM NaCl, pH7.4). 5 % trehalose and 5 % mannitol are added as protectant before lyophilization.
Storage	Short-term storage: Store at 2-8°C for (1-2 weeks). Long-term storage: Aliquot and store at -20°C to -80°C for up to 3 months, reconstitution with sterile water and addition of an equal volume of glycerol. Avoid repeat freeze-thaw cycles.
AA Sequence	<p>MSGEDEQQEQTIAEDLVVTKYKMGDIANRVLRLSVEASSSGVSVLSLCEKGDAMI MEETGKIFKKEKEMKKGIAFPTSISVNNCVCHFSPKSDQDYILKEGDLVKIDLGVHV DGFIANVAHTFVVDVAQGTQVTGRKADVIKAAHLCAEAALRLVKPGNQNTQVTEAW NKVAHSFNCTPIEGMLSHQLKQHVIDGEKTIIQNPTDQQKKDHEKAEFEVHEVYAVD VLVSSGEGKAKDAGQRTTIYKRDPKQYGLKMKTSRAFFSEVERRFDAMPFTLRAF EDEKKARMGVVECAKHELLQPFNVLYEKEGEFVAQFKFTVLLMPNGPMRITSGPFE PDLYKSEMEVQDAELKALLQSSASRKTQKKKKKKASKTAENATSGETLEENEAGD</p>

 Tel: 1-631-559-9269 1-516-512-3133

 Email: info@creative-biomart.com  Fax: 1-631-938-8127

 45-1 Ramsey Road, Shirley, NY 11967, USA

Purity 90%, by SDS-PAGE with Coomassie Brilliant Blue staining.

GENE INFORMATION

Official Symbol [PA2G4](#)

Synonyms

PA2G4; proliferation-associated 2G4, 38kDa; proliferation associated 2G4, 38kD; proliferation-associated protein 2G4; erbB3-binding protein 1; ErbB-3 binding protein 1; ErbB3-binding protein Ebp1; cell cycle protein p38-2G4 homolog; EBP1; HG4-1; p38-2G4;

Gene ID [5036](#)

mRNA Refseq [NM_006191](#)

Protein Refseq [NP_006182](#)

MIM [602145](#)

UniProt ID [Q9UQ80](#)

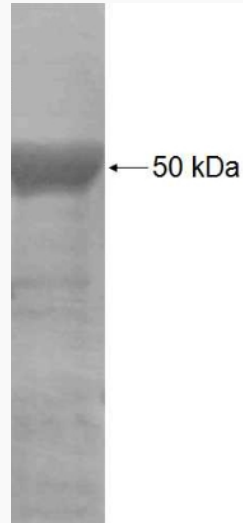
 Tel: 1-631-559-9269 1-516-512-3133

 Email: info@creative-biomart.com  Fax: 1-631-938-8127

 45-1 Ramsey Road, Shirley, NY 11967, USA



SDS-PAGE



Tel: 1-631-559-9269 1-516-512-3133

Email: info@creative-biomart.com Fax: 1-631-938-8127

45-1 Ramsey Road, Shirley, NY 11967, USA