

Recombinant Human PACSIN1 Protein (Met1-Ile444), C-His tagged

Cat. No. PACSIN1-4232H Lot. No. (See product label)

SPECIFICATION

Product Overview	Recombinant human PACSIN1 (Met1-Ile444) fused with the C-terminal His tag was expressed in Mammalian cells.
Species	Human
Source	Mammalian Cells
ProteinLength	Met1-Ile444
Form	Lyophilized powder/frozen liquid
Molecular Mass	48.84 kDa
Purity	>90% as determined by SDS-PAGE.
Notes	For research use only.
Storage	Use a manual defrost freezer and avoid repeated freeze thaw cycles. Store at 2 to 8 centigrade for one week. Store at -20 to -80 centigrade for twelve months from the date of receipt.
Storage Buffer	Supplied as solution form in PBS or lyophilized from PBS.
Reconstitution	Reconstitute in sterile water for a stock solution.

 Tel: 1-631-559-9269 1-516-512-3133

 Email: info@creative-biomart.com  Fax: 1-631-938-8127

 45-1 Ramsey Road, Shirley, NY 11967, USA

Shipping

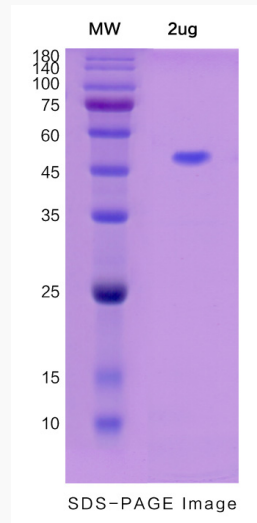
They are shipped out with dry ice/blue ice unless customers require otherwise.

GENE INFORMATION

Gene Name	PACSIN1 protein kinase C and casein kinase substrate in neurons 1 [Homo sapiens (human)]
Official Symbol	PACSIN1
Synonyms	PACSIN1; protein kinase C and casein kinase substrate in neurons 1; protein kinase C and casein kinase substrate in neurons protein 1; SDPI; syndapin I; KIAA1379;
Gene ID	29993
mRNA Refseq	NM_001199583
Protein Refseq	NP_001186512
MIM	606512
UniProt ID	Q9BY11

 Tel: 1-631-559-9269 1-516-512-3133 Email: info@creative-biomart.com  Fax: 1-631-938-8127 45-1 Ramsey Road, Shirley, NY 11967, USA

SDS-PAGE



 Tel: 1-631-559-9269 1-516-512-3133

 Email: info@creative-biomart.com  Fax: 1-631-938-8127

 45-1 Ramsey Road, Shirley, NY 11967, USA