

Recombinant Human PACSIN1 Protein, Myc/DDK-tagged, C13 and N15-labeled

Cat. No. PACSIN1-5046H Lot. No. (See product label)

SPECIFICATION

Product Overview

PACSIN1 MS Standard C13 and N15-labeled recombinant protein (NP_065855) with a C-terminal MYC/DDK tag, was expressed in HEK293 cells.

Species

Human

Source

HEK293

Description

PACSIN1 (Protein Kinase C And Casein Kinase Substrate In Neurons 1) is a Protein Coding gene. Diseases associated with PACSIN1 include Autosomal Recessive Non-Syndromic Intellectual Disability. Among its related pathways are Vesicle-mediated transport and Clathrin-mediated endocytosis. Gene Ontology (GO) annotations related to this gene include phospholipid binding and cytoskeletal protein binding. An important paralog of this gene is PACSIN2.

Molecular Mass

50.8 kDa

AA Sequence

MSSSYDEASLAPEETDTSFWEVGNKRTVKRIDDGHRLCNDLMNCVQERAKIEKAY
GQQLTDWAKRWRQLIEKGPQYGSLEAWGAIMTEADKVSELHQEVKNLLNEDLE
KVKNWQKDAYHKQIMGGFKETKEAEDGFRKAQKPWAKKMKELEAAKKAYHLACKE
EKLAMTREMNSKTEQSVTPEQQKLLQDKVDKCKQDVQKTQEKEYEVLVDVGKTP
QYMENMEQVFEQCQQFEEKRLVFLKEVLLDIKRHLNLAENSSYIHVYRELEQAIRGA
DAQEDLRWFRSTSGPGMPMNWPQFEEWNPDLPHTTTTKKEKQPKKAEGVALTNAT
GAVESTSQAGDRGSVSSYDRGQPYATEWSDDESIGNPFGGSETNGGANPFEDDSK

 Tel: 1-631-559-9269 1-516-512-3133

 Email: info@creative-biomart.com  Fax: 1-631-938-8127

 45-1 Ramsey Road, Shirley, NY 11967, USA

GVRVRALYDYDGQEQDELSEFKAGDELTKLGEEDQGWCRGRDLSGQLGLYPANY
VEAITRTRPLEQKLISEEDLAANDILDYKDDDDKV

Purity > 80% as determined by SDS-PAGE and Coomassie blue staining

Stability Stable for 3 months from receipt of products under proper storage and handling conditions.

Storage Store at -80 centigrade. Avoid repeated freeze-thaw cycles.

Concentration 50 µg/mL as determined by BCA

Storage Buffer 100 mM glycine, 25 mM Tris-HCl, pH 7.3.

GENE INFORMATION

Gene Name PACSIN1 protein kinase C and casein kinase substrate in neurons 1 [Homo sapiens (human)]

Official Symbol PACSIN1

Synonyms PACSIN1; protein kinase C and casein kinase substrate in neurons 1; protein kinase C and casein kinase substrate in neurons protein 1; SDPI; syndapin I; KIAA1379;

Gene ID 29993

mRNA Refseq NM_020804

Protein Refseq NP_065855

MIM 606512

 Tel: 1-631-559-9269 1-516-512-3133

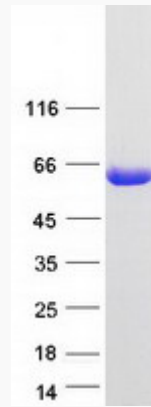
 Email: info@creative-biomart.com  Fax: 1-631-938-8127

 45-1 Ramsey Road, Shirley, NY 11967, USA

UniProt ID

Q9BY11

SDS-PAGE



 Tel: 1-631-559-9269 1-516-512-3133

 Email: info@creative-biomart.com  Fax: 1-631-938-8127

 45-1 Ramsey Road, Shirley, NY 11967, USA