

# Recombinant Full Length Human PADI1 Protein, C-Flag-tagged

**Cat. No.** PADI1-1850HFL    **Lot. No.** (See product label)

## SPECIFICATION

<b>Product Overview</b>	Recombinant Full Length Human PADI1 Protein, fused to Flag-tag at C-terminus, was expressed in Mammalian cells.
<b>Species</b>	Human
<b>Source</b>	Mammalian Cells
<b>Description</b>	This gene encodes a member of the peptidyl arginine deiminase family of enzymes, which catalyze the post-translational deimination of proteins by converting arginine residues into citrullines in the presence of calcium ions. The family members have distinct substrate specificities and tissue-specific expression patterns. The type I enzyme is involved in the late stages of epidermal differentiation, where it deiminates filaggrin and keratin K1, which maintains hydration of the stratum corneum, and hence the cutaneous barrier function. This enzyme may also play a role in hair follicle formation. This gene exists in a cluster with four other paralogous genes.
<b>Form</b>	25 mM Tris HCl, pH 7.3, 100 mM glycine, 10% glycerol.
<b>Molecular Mass</b>	74.5 kDa
<b>AA Sequence</b>	MAPKRVVQLSLKMPHVAVCVVGVEAHVDIHSVDPKGANSFRVSGSSGVEVFMVYN RTRVKEPIGKARWPL DTDADMVSVGTASKELKDFKVRVSYFGEQEDQALGRSVL YLTGVDISLEVDGTGRTGKVKRSQGDKKTWR WGPEGYGAILLVNCDRDNHRSAEPD LTHSWLMSLADLQDMSPMLLSCNGPDKLFDShklvlnvpfSDSKR VRFVFCARGGN SLSDYKQVLGPPQCLSYEVERQPGEQEIKFYVEGLTFPDADFLGLVSLVSLVDPGTL

 Tel: 1-631-559-9269    1-516-512-3133

 Email: [info@creative-biomart.com](mailto:info@creative-biomart.com)     Fax: 1-631-938-8127

 45-1 Ramsey Road, Shirley, NY 11967, USA

PEV TLFTDTVGFRMAPWIMTPNTQPPEELYVCRVMDTHGSNEKFLEDMSYLTLKAN  
 CKLTICPQVENRNRDWI QDEMEFGYIEAPHKSPVVFDSRNRGLKDFPYKRILGPD  
 FGYVTREIPLPGPSSLDSFGNLDVSPVTV GGTEYPLGRILIGSSFPKSGGRQMARA  
 VRNFLKAQQVQAPVELYSDWLSVGHVDEFLTTFVPTSDQKGFRL LLASPSACLKLFQ  
 EKKEEGYGEEAAQFDGLKHQAKRSINEMLADRHLQRDNLHAQKCIDWNRNVLKREL  
 GL AESDIVDIPQLFFLKNFYAEAFFPDMVMNVVLGKYLGIPKPYGPIINGRCCLEEKV  
 QSLEPLGLHCIFI DDYLSYHELQGEIHCGTNRVRKPFPPFKWWNMVP TRTRPLEQK  
 LISEEDLAANDILDYKDDDDKV

<b>Purity</b>	> 80% as determined by SDS-PAGE and Coomassie blue staining.
<b>Stability</b>	Stable for 12 months from the date of receipt of the product under proper storage and handling conditions. Avoid repeated freeze-thaw cycles.
<b>Storage</b>	Store at -80 centigrade.
<b>Concentration</b>	>50 ug/mL as determined by microplate BCA method.
<b>Preparation</b>	Recombinant protein was captured through anti-DDK affinity column followed by conventional chromatography steps.
<b>Full Length</b>	Full L.

## GENE INFORMATION

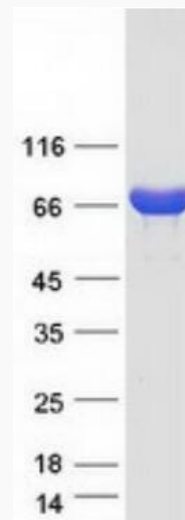
<b>Gene Name</b>	PADI1 peptidyl arginine deiminase 1 [ Homo sapiens (human) ]
<b>Official Symbol</b>	PADI1
<b>Synonyms</b>	PDI; PAD1; PDI1; HPAD10

 Tel: 1-631-559-9269 1-516-512-3133

 Email: [info@creative-biomart.com](mailto:info@creative-biomart.com)  Fax: 1-631-938-8127

 45-1 Ramsey Road, Shirley, NY 11967, USA

Gene ID	29943
mRNA Refseq	NM_013358.3
Protein Refseq	NP_037490.2
MIM	607934
UniProt ID	Q9ULC6



Coomassie blue staining of purified PADI1 protein.

Tel: 1-631-559-9269 1-516-512-3133

Email: [info@creative-biomart.com](mailto:info@creative-biomart.com) Fax: 1-631-938-8127

45-1 Ramsey Road, Shirley, NY 11967, USA