

Recombinant Human peptidyl arginine deiminase 2 Protein, His-tagged

Cat. No. PADI2-001H **Lot. No.** (See product label)

SPECIFICATION

Product Overview	Recombinant Human PADI2 Protein with C-His tag was expressed in E. coli.
Species	Human
Source	E.coli
ProteinLength	1-115 aa
Description	<p>This gene encodes a member of the peptidyl arginine deiminase family of enzymes, which catalyze the post-translational deimination of proteins by converting arginine residues into citrullines in the presence of calcium ions. The family members have distinct substrate specificities and tissue-specific expression patterns. The type II enzyme is the most widely expressed family member. Known substrates for this enzyme include myelin basic protein in the central nervous system and vimentin in skeletal muscle and macrophages. This enzyme is thought to play a role in the onset and progression of neurodegenerative human disorders, including Alzheimer disease and multiple sclerosis, and it has also been implicated in glaucoma pathogenesis. This gene exists in a cluster with four other paralogous genes.</p>
Tag	C-His
Molecular Mass	12.8 kDa
AA Sequence	MLRERTVRLQYGSRVEAVYVLGTYLWTDVYSAAPAGAQTFLSKHSEHVWVEVVRD

 Tel: 1-631-559-9269 1-516-512-3133

 Email: info@creative-biomart.com  Fax: 1-631-938-8127

 45-1 Ramsey Road, Shirley, NY 11967, USA

GEAEEVATNGKQRWLLSPSTTLRVMTMSQASTEASSDKVTVNYYDEEGSIPIDQAGLF
LTAHHHHHHHHH

Endotoxin < 2 EU/μg by LAL

Purity > 95% by SDS-PAGE.

Storage Store it under sterile conditions at -20 to -80 centigrade. It is recommended that the protein be aliquoted for optimal storage. Avoid repeated freeze-thaw cycles.

Concentration 1 mg/mL

Storage Buffer Sterile PBS, pH7.4

GENE INFORMATION

Gene Name PADI2 peptidyl arginine deiminase 2 [Homo sapiens (human)]

Official Symbol PADI2

Synonyms PADI2; peptidyl arginine deiminase 2; PAD2; PDI2; PAD-H19; protein-arginine deiminase type-2; peptidyl arginine deiminase, type II; protein-arginine deiminase type II; EC 3.5.3.15

Gene ID 11240


mRNA Refseq NM_007365

Protein Refseq NP_031391

MIM 607935

 Tel: 1-631-559-9269 1-516-512-3133

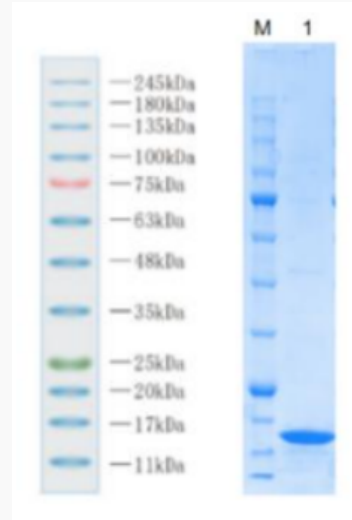
 Email: info@creative-biomart.com  Fax: 1-631-938-8127

 45-1 Ramsey Road, Shirley, NY 11967, USA

UniProt ID

Q9Y2J8

SDS-PAGE



Reducing 4%-20% SDS-PAGE (CBB stained) analysis profile of purified PADI2.

 Tel: 1-631-559-9269 1-516-512-3133

 Email: info@creative-biomart.com  Fax: 1-631-938-8127

 45-1 Ramsey Road, Shirley, NY 11967, USA