

Active Recombinant Human PADI2 Protein, His-tagged

Cat. No. PADI2-102H Lot. No. (See product label)

SPECIFICATION

Product Overview	Active recombinant N-terminal His-tagged human PADI2 protein was isolated from a baculovirus overexpression system.
Species	Human
Source	Insect Cells
Description	<p>This gene encodes a member of the peptidyl arginine deiminase family of enzymes, which catalyze the post-translational deimination of proteins by converting arginine residues into citrullines in the presence of calcium ions. The family members have distinct substrate specificities and tissue-specific expression patterns. The type II enzyme is the most widely expressed family member. Known substrates for this enzyme include myelin basic protein in the central nervous system and vimentin in skeletal muscle and macrophages. This enzyme is thought to play a role in the onset and progression of neurodegenerative human disorders, including Alzheimer disease and multiple sclerosis, and it has also been implicated in glaucoma pathogenesis. This gene exists in a cluster with four other paralogous genes.</p>
Bio-activity	≥500 U/mg
Molecular Mass	77.32 kDa
Purity	≥90% as determined by SDS-PAGE
Unit Definition	One unit is defined as the amount of enzyme required to produce 1 nmol of NH ₄ ⁺ per

 Tel: 1-631-559-9269 1-516-512-3133

 Email: info@creative-biomart.com  Fax: 1-631-938-8127

 45-1 Ramsey Road, Shirley, NY 11967, USA

minute at 37 centigrade in 50 mM HEPES, pH 7.7, containing 10 mM calcium chloride, 5 mM DTT, and 5 mM N- α -Benzoyl-L-Arginineethyl ester (BAEE).

Stability \geq 6 months

Storage At -80 centigrade.

Storage Buffer 50 mM HEPES, pH 8.0, with 200 mM NaCl, 1 mM DTT and 10% glycerol

GENE INFORMATION

Gene Name PADI2 peptidyl arginine deiminase 2 [Homo sapiens (human)]

Official Symbol PADI2

Synonyms PADI2; peptidyl arginine deiminase 2; PAD2; PDI2; PAD-H19; protein-arginine deiminase type-2; peptidyl arginine deiminase, type II; protein-arginine deiminase type II; EC 3.5.3.15

Gene ID 11240

mRNA Refseq NM_007365

Protein Refseq NP_031391

MIM 607935

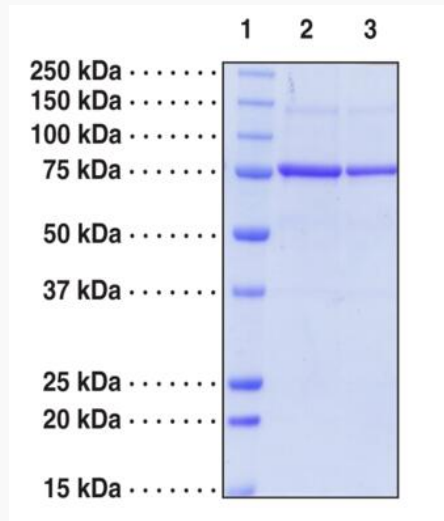
UniProt ID Q9Y2J8

 Tel: 1-631-559-9269 1-516-512-3133

 Email: info@creative-biomart.com  Fax: 1-631-938-8127

 45-1 Ramsey Road, Shirley, NY 11967, USA

**SDS-PAGE analysis
of PAD2**

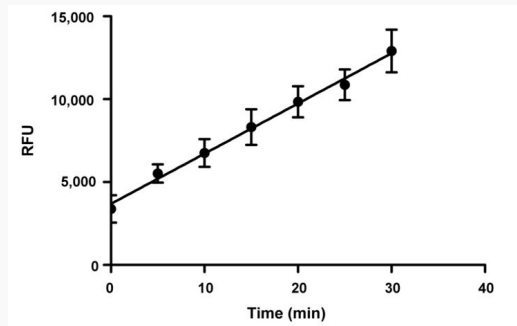


Lane 1: MW Markers

Lane 2: PAD2 (5 µg)

Lane 3: PAD2 (2 µg)

**PAD2 Activity with 5
mM BAEE**

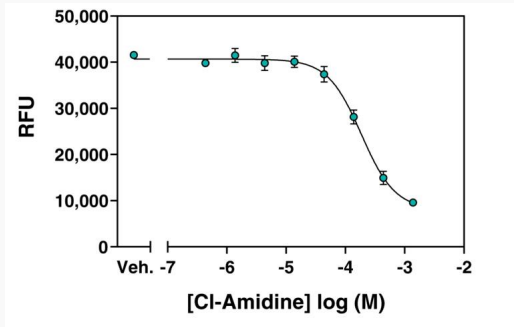


Tel: 1-631-559-9269 1-516-512-3133

Email: info@creative-biomart.com Fax: 1-631-938-8127

45-1 Ramsey Road, Shirley, NY 11967, USA

Inhibition of human recombinant PAD2 by CI-Amidine



 Tel: 1-631-559-9269 1-516-512-3133

 Email: info@creative-biomart.com  Fax: 1-631-938-8127

 45-1 Ramsey Road, Shirley, NY 11967, USA