

# Recombinant Human PADI2 Protein, Myc/DDK-tagged, C13 and N15-labeled

**Cat. No.** PADI2-1634H    **Lot. No.** (See product label)

## SPECIFICATION

<b>Product Overview</b>	PADI2 MS Standard C13 and N15-labeled recombinant protein (NP_031391) with a C-terminal MYC/DDK tag, was expressed in HEK293 cells.
<b>Species</b>	Human
<b>Source</b>	HEK293
<b>Description</b>	<p>This gene encodes a member of the peptidyl arginine deiminase family of enzymes, which catalyze the post-translational deimination of proteins by converting arginine residues into citrullines in the presence of calcium ions. The family members have distinct substrate specificities and tissue-specific expression patterns. The type II enzyme is the most widely expressed family member. Known substrates for this enzyme include myelin basic protein in the central nervous system and vimentin in skeletal muscle and macrophages. This enzyme is thought to play a role in the onset and progression of neurodegenerative human disorders, including Alzheimer disease and multiple sclerosis, and it has also been implicated in glaucoma pathogenesis. This gene exists in a cluster with four other paralogous genes.</p>
<b>Molecular Mass</b>	75.4 kDa
<b>AA Sequence</b>	<p>MLRERTVRLQYGSRVEAVYVLGTYLWTDVYSAAPAGAQTFLSKHSEHVWVEVVRD            GEAEVATNGKQRWLLSPSTTLRVTMSQASTEASSDKVTVNYYDEEGSIPIDQAGLF            LTAIEISLDVDADRDGVVEKNNPKKASWTWGPEGQGAILLVNC DRET P WLPKEDCR</p>

 Tel: 1-631-559-9269    1-516-512-3133

 Email: [info@creative-biomart.com](mailto:info@creative-biomart.com)     Fax: 1-631-938-8127

 45-1 Ramsey Road, Shirley, NY 11967, USA

DEKVYSKEDLKDMSQMILRTKGPDRLPAGYEIVLYISMSDSKVGVFYVENPFFGQR  
 YIHILGRRKLYHVVKYTGGSAELFFVEGLCFPDEGFSGLVSIHVSLLLEYMAQDIPLTP  
 IFTDVTIFRIAPWIMTPNILPPVSVFVCCMKDNYLFLKEVKNLVEKTNCELKVCFQYLN  
 RGDRWIQDEIEFGYIEAPHKGFVVLDSPRDGNLKDFPVKELLGPDFGYVTREPLFE  
 SVTSLDSFGNLEVSPPVTVNGKTYPLGRILIGSSFPLSGGRRMTKVVRDFLKAQQVQ  
 APVELYSDWLTVGHVDEFMSFVPIPGTKKFLLLMASTSACYKLFREKQKDGHGGEAIM  
 FKGLGGMSSKRITINKILSNESLVQENLYFQRCLDWNRDILKKELGLTEQDIIDLPALE  
 KMDEDHRARAFFPNMVMIVLDKDLGIPKPFQVEEECCLEMHVRLLEPLGLEC  
 TFIDDISAYHKFLGEVHCCTNVRRKPFTFKWWHMVPTRTRPLEQKLISEEDLAANDIL  
 DYKDDDDKV

**Purity** > 80% as determined by SDS-PAGE and Coomassie blue staining

**Stability** Stable for 3 months from receipt of products under proper storage and handling conditions.

**Storage** Store at -80 centigrade. Avoid repeated freeze-thaw cycles.

**Concentration** 50 µg/mL as determined by BCA

**Storage Buffer** 100 mM glycine, 25 mM Tris-HCl, pH 7.3.

## GENE INFORMATION

**Gene Name** PADI2 peptidyl arginine deiminase 2 [ Homo sapiens (human) ]

**Official Symbol** PADI2

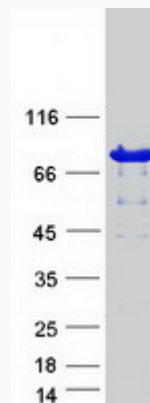
**Synonyms** PADI2; peptidyl arginine deiminase, type II; protein-arginine deiminase type-2; KIAA0994; PDI2; protein arginine deiminase; peptidylarginine deiminase II; peptidylarginine deiminase type II; protein-arginine deiminase type II; PAD2; PAD-

 Tel: 1-631-559-9269 1-516-512-3133

 Email: [info@creative-biomart.com](mailto:info@creative-biomart.com)  Fax: 1-631-938-8127

 45-1 Ramsey Road, Shirley, NY 11967, USA

H19;

**Gene ID** 11240**mRNA Refseq** NM\_007365**Protein Refseq** NP\_031391**MIM** 607935**UniProt ID** Q9Y2J8**SDS-PAGE** Tel: 1-631-559-9269 1-516-512-3133 Email: [info@creative-biomart.com](mailto:info@creative-biomart.com)  Fax: 1-631-938-8127 45-1 Ramsey Road, Shirley, NY 11967, USA