

## Recombinant Human PADI2 protein, His-tagged

**Cat. No.** PADI2-5928H    **Lot. No.** (See product label)

### SPECIFICATION

<b>Product Overview</b>	Recombinant Human PADI2 protein(Q9Y2J8)(1-665aa) was expressed in Mammalian cells with a polyhistidine tag at the C-terminus.
<b>Species</b>	Human
<b>Source</b>	Mammalian cells
<b>ProteinLength</b>	1-665 aa
<b>Form</b>	If the delivery form is liquid, the default storage buffer is Tris/PBS-based buffer, 5%-50% glycerol. If the delivery form is lyophilized powder, the buffer before lyophilization is Tris/PBS-based buffer, 6% Trehalose.
<b>Molecular Mass</b>	77.1 kDa
<b>AASequence</b>	<p>MLRERTVRLQYGSRVEAVYVLGTYLWTDVYSAAPAGAQTFSCLKHSEHVWVEVVRD            GEAEVATNGKQRWLLSPSTTLRVMTMSQASTEASSDKVTVNYYDEEGSIPIDQAGLF            LTAIEISLDVDADR DGVVEKNNPKKASWTWGPEGQGAILLVNC DRET P WLPKEDCR            DEKVYSKEDLKDMSQMILRTKGPDR LPAGYEIVLYISMSDS DKVGVFYVENPFFGQR            YIHILGRRKLYHVVKYTGGSAELLFFVEGLCFPDEGFSGLVSIHVSLLEYMAQDIPLTP            IFTDTVIFRIAPWIMTPNILPPVSVFVCCMKDNYLFLKEVKNLVEKTNCELKVCFQYLN            RGDRWIQDEIEFGYIEAPHKGFVVLDS PRDGNLKD FPKELLGPDFGYVTREPLFE            SVTSLDSFGNLEVSPPVTVNGKTYPLGRILIGSSFPLSGRRMTKVVRDFLKAQQVQ            APVELYSDWLT VGHVDEFMSFVPIPGTKKFLLLMASTSACYKLFREKQKDGHGGEAIM            FKGLGGMSSKRITINKILSNESLVQENLYFQRCLDWNRDILKKELGLTEQDIIDL PALF</p>

 Tel: 1-631-559-9269    1-516-512-3133

 Email: [info@creative-biomart.com](mailto:info@creative-biomart.com)     Fax: 1-631-938-8127

 45-1 Ramsey Road, Shirley, NY 11967, USA

KMDEDHRARAFFPNMVMIVLKDLDGIPKPFQVVEECCLMHVRLLEPLGLEC  
TFIDDISAYHKFLGEVHCGTNRKPFKWWHMVP

**Purity** Greater than 85% as determined by SDS-PAGE.

**Storage** Store at -20°C/-80°C upon receipt, aliquoting is necessary for multiple use. Avoid repeated freeze-thaw cycles.

**Reconstitution** We recommend that this vial be briefly centrifuged prior to opening to bring the contents to the bottom. Please reconstitute protein in deionized sterile water to a concentration of 0.1-1.0 mg/mL.

## GENE INFORMATION

**Gene Name** PADI2 peptidyl arginine deiminase, type II [ Homo sapiens ]

**Official Symbol** PADI2

**Synonyms** PADI2; peptidyl arginine deiminase, type II; protein-arginine deiminase type-2; KIAA0994; PDI2; protein arginine deiminase; peptidylarginine deiminase II; peptidylarginine deiminase type II; protein-arginine deiminase type II; PAD2; PAD-H19;

**Gene ID** 11240

**mRNA Refseq** NM\_007365

**Protein Refseq** NP\_031391

**MIM** 607935

 Tel: 1-631-559-9269 1-516-512-3133

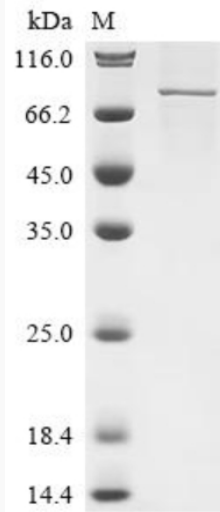
 Email: [info@creative-biomart.com](mailto:info@creative-biomart.com)  Fax: 1-631-938-8127

 45-1 Ramsey Road, Shirley, NY 11967, USA

UniProt ID

Q9Y2J8

SDS-PAGE



 Tel: 1-631-559-9269 1-516-512-3133

 Email: [info@creative-biomart.com](mailto:info@creative-biomart.com)  Fax: 1-631-938-8127

 45-1 Ramsey Road, Shirley, NY 11967, USA