

Recombinant Full Length Human PAFAH1B2 Protein, C-Flag-tagged

Cat. No. PAFAH1B2-2026HFL **Lot. No.** (See product label)

SPECIFICATION

Product Overview	Recombinant Full Length Human PAFAH1B2 Protein, fused to Flag-tag at C-terminus, was expressed in Mammalian cells.
Species	Human
Source	Mammalian Cells
Description	Platelet-activating factor acetylhydrolase (PAFAH) inactivates platelet-activating factor (PAF) into acetate and LYSO-PAF. This gene encodes the beta subunit of PAFAH, the other subunits are alpha and gamma. Multiple alternatively spliced transcript variants have been described for this gene.
Form	25 mM Tris HCl, pH 7.3, 100 mM glycine, 10% glycerol.
Molecular Mass	25.4 kDa
AA Sequence	MSQGDSNPAAIPHAAEDIQGDDRWMSQHNRFVLDCKDKEPDVLFVGDSDMVQLMQ QYEIWRELFSPHLALN FGIGGDTTRHVLWRLKNGELENIKPKVIVVWVGTTNNHENTA EEVAGGIEAIVQLINTRQPQAKIIVLGLL PRGEKPNPLRQKNAKVNQLLKVSLPKLAN VQLLDTDGGFVHSDGAISCHDMFDLHHLTGGGYAKICKPLH ELIMQLLEETPEEKQT TIA TRTRPLEQKLISEEDLAANDILDYKDDDDKV
Purity	> 80% as determined by SDS-PAGE and Coomassie blue staining.

 Tel: 1-631-559-9269 1-516-512-3133

 Email: info@creative-biomart.com  Fax: 1-631-938-8127

 45-1 Ramsey Road, Shirley, NY 11967, USA

Stability	Stable for 12 months from the date of receipt of the product under proper storage and handling conditions. Avoid repeated freeze-thaw cycles.
Storage	Store at -80 centigrade.
Concentration	>50 ug/mL as determined by microplate BCA method.
Preparation	Recombinant protein was captured through anti-DDK affinity column followed by conventional chromatography steps.
Protein Pathways	Ether lipid metabolism, Metabolic pathways
Full Length	Full L.

GENE INFORMATION

Gene Name	PAFAH1B2 platelet activating factor acetylhydrolase 1b catalytic subunit 2 [Homo sapiens (human)]
Official Symbol	PAFAH1B2
Synonyms	HEL-S-303
Gene ID	5049
mRNA Refseq	NM_002572.4
Protein Refseq	NP_002563.1
MIM	602508

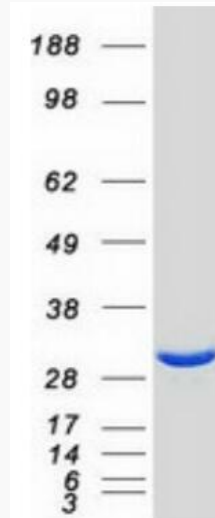
 Tel: 1-631-559-9269 1-516-512-3133

 Email: info@creative-biomart.com  Fax: 1-631-938-8127

 45-1 Ramsey Road, Shirley, NY 11967, USA

UniProt ID

P68402



Coomassie blue staining of purified PFAH1B2 protein.

 Tel: 1-631-559-9269 1-516-512-3133

 Email: info@creative-biomart.com  Fax: 1-631-938-8127

 45-1 Ramsey Road, Shirley, NY 11967, USA