

## Recombinant Human PAFAH1B2 Protein (Ser2-Ala229), C-His tagged

Cat. No. PAFAH1B2-4790H    Lot. No. (See product label)

### SPECIFICATION

<b>Product Overview</b>	Recombinant human PAFAH1B2 (Ser2-Ala229) fused with the C-terminal His tag was expressed in E. coli.
<b>Species</b>	Human
<b>Source</b>	E.coli
<b>ProteinLength</b>	Ser2-Ala229
<b>Form</b>	Lyophilized powder/frozen liquid
<b>Molecular Mass</b>	25.08 kDa
<b>Purity</b>	>90% as determined by SDS-PAGE.
<b>Notes</b>	For research use only.
<b>Storage</b>	Use a manual defrost freezer and avoid repeated freeze thaw cycles. Store at 2 to 8 centigrade for one week. Store at -20 to -80 centigrade for twelve months from the date of receipt.
<b>Storage Buffer</b>	Supplied as solution form in PBS or lyophilized from PBS.
<b>Reconstitution</b>	Reconstitute in sterile water for a stock solution.

 Tel: 1-631-559-9269    1-516-512-3133

 Email: [info@creative-biomart.com](mailto:info@creative-biomart.com)     Fax: 1-631-938-8127

 45-1 Ramsey Road, Shirley, NY 11967, USA

**Shipping** They are shipped out with dry ice/blue ice unless customers require otherwise.

## GENE INFORMATION

**Gene Name** PAFAH1B2 platelet-activating factor acetylhydrolase 1b, catalytic subunit 2 (30kDa) [ Homo sapiens (human) ]

**Official Symbol** PAFAH1B2

**Synonyms** PAFAH1B2; platelet-activating factor acetylhydrolase 1b, catalytic subunit 2 (30kDa); platelet activating factor acetylhydrolase, isoform 1b, beta subunit 30kDa, platelet activating factor acetylhydrolase, isoform 1b, subunit 2 (30kDa); platelet-activating factor acetylhydrolase 1B subunit beta; PAF AH1b alpha 2 subunit; PAFAH subunit beta; PAF-AH subunit beta; PAF-AH 30 kDa subunit; PAF-AH1b alpha 2 subunit; PAF acetylhydrolase 30 kDa subunit; intracellular platelet-activating factor acetylhydrolase alpha 2 subunit; platelet-activating factor acetylhydrolase, isoform 1b, subunit 2 (30kDa);

**Gene ID** 5049

**mRNA Refseq** NM\_001184746

**Protein Refseq** NP\_001171675

**MIM** 602508

**UniProt ID** P68402

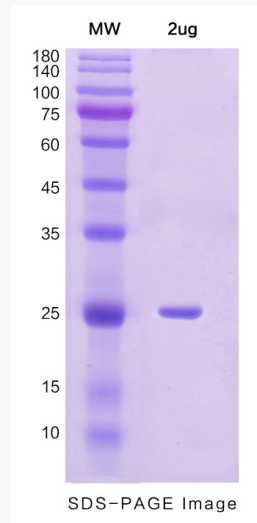
 Tel: 1-631-559-9269 1-516-512-3133

 Email: [info@creative-biomart.com](mailto:info@creative-biomart.com)  Fax: 1-631-938-8127

 45-1 Ramsey Road, Shirley, NY 11967, USA



SDS-PAGE



Tel: 1-631-559-9269 1-516-512-3133

Email: [info@creative-biomart.com](mailto:info@creative-biomart.com) Fax: 1-631-938-8127

45-1 Ramsey Road, Shirley, NY 11967, USA