

Recombinant Human PAFAH2 Protein, His-tagged

Cat. No. PAFAH2-039H Lot. No. (See product label)

SPECIFICATION

Product Overview	Active recombinant N-terminal His-tagged human PAFAH2 protein (2-392) was expressed in E. coli.
Species	Human
Source	E.coli
ProteinLength	2-392
Description	This gene encodes platelet-activating factor acetylhydrolase isoform 2, a single-subunit intracellular enzyme that catalyzes the removal of the acetyl group at the SN-2 position of platelet-activating factor (identified as 1-O-alkyl-2-acetyl-sn-glycerol-3-phosphorylcholine). However, this lipase exhibits a broader substrate specificity than simply platelet activating factor. Two other isoforms of intracellular platelet-activating factor acetylhydrolase exist, and both are multi-subunit enzymes. Additionally, there is a single-subunit serum isoform of this enzyme.
Molecular Mass	46.1 kDa
Purity	≥80% as determined by SDS-PAGE
Unit Definition	One unit is defined as the amount required to produce 1 nmol of TNB per minute at 37 centigrade in 50 mM HEPES, pH 7.4, containing 150 mM sodium chloride, 5 mM CHAPS, 1mM EDTA, 5% glycerol, and 300µM 2-thio PAF.

 Tel: 1-631-559-9269 1-516-512-3133

 Email: info@creative-biomart.com  Fax: 1-631-938-8127

 45-1 Ramsey Road, Shirley, NY 11967, USA

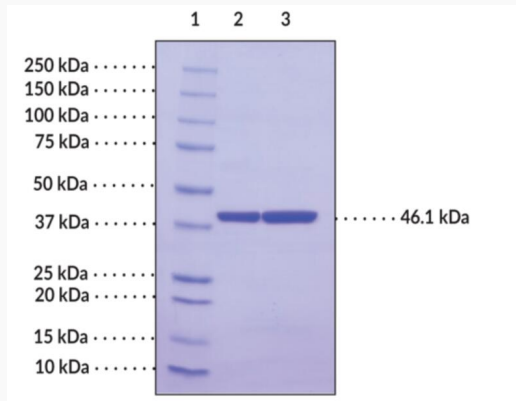
Stability	≥ 6 months
Storage	At -80 centigrade.
Storage Buffer	50 mM HEPES, pH 8.0, with 300 mM sodium chloride and 20% glycerol
GENE INFORMATION	
Gene Name	PAFAH2 platelet activating factor acetylhydrolase 2 [Homo sapiens (human)]
Official Symbol	PAFAH2
Synonyms	PAFAH2; platelet activating factor acetylhydrolase 2; platelet-activating factor acetylhydrolase 2, cytoplasmic; SD-PLA2; PAF:lysophospholipid transacetylase; AF:sphingosine transacetylase; platelet-activating factor acetylhydrolase 2, 40kDa; platelet-activating factor acetyltransferase PAFAH2; serine-dependent phospholipase A2; EC 2.3.1.149; EC 3.1.1.47
Gene ID	5051
mRNA Refseq	NM_000437
Protein Refseq	NP_000428
MIM	602344
UniProt ID	Q99487

 Tel: 1-631-559-9269 1-516-512-3133

 Email: info@creative-biomart.com  Fax: 1-631-938-8127

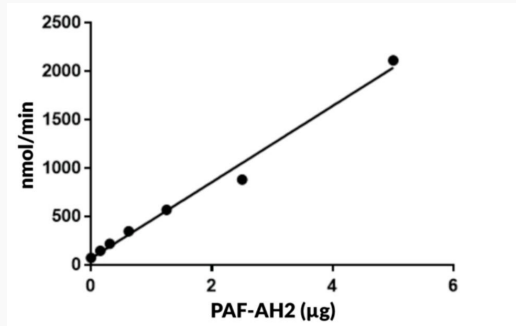
 45-1 Ramsey Road, Shirley, NY 11967, USA

**SDS-PAGE analysis
of PAFAH2**



Lane 1: MW Markers
Lane 2: PAF-AH2 (2 µg)
Lane 3: PAF-AH2 (4 µg)

**PAF-AH2 Activity
Assay**



 Tel: 1-631-559-9269 1-516-512-3133

 Email: info@creative-biomart.com  Fax: 1-631-938-8127

 45-1 Ramsey Road, Shirley, NY 11967, USA