

Recombinant Human PAFAH2 Protein, His-tagged

Cat. No. PAFAH2-19H Lot. No. (See product label)

SPECIFICATION

Product Overview	Recombinant human PAFAH2 protein (2-392) with a N-terminal His-tag was expressed in E. coli.
Species	Human
Source	E.coli
ProteinLength	2-392
Description	This gene encodes platelet-activating factor acetylhydrolase isoform 2, a single-subunit intracellular enzyme that catalyzes the removal of the acetyl group at the SN-2 position of platelet-activating factor (identified as 1-O-alkyl-2-acetyl-sn-glycerol-3-phosphorylcholine). However, this lipase exhibits a broader substrate specificity than simply platelet activating factor. Two other isoforms of intracellular platelet-activating factor acetylhydrolase exist, and both are multi-subunit enzymes. Additionally, there is a single-subunit serum isoform of this enzyme.
Form	50 mM HEPES, pH 8.0, 150 mM sodium chloride, and 20% glycerol
Molecular Mass	46.1 kDa
Unit Definition	One unit is defined as the amount required to produce 1 nmol of TNB per minute at 37 centigrade in 50 mM HEPES, pH 7.4, containing 150 mM sodium chloride, 5 mM CHAPS, 1 mM EDTA, 5% glycerol, and 300 μ M 2-thio-PAF.

 Tel: 1-631-559-9269 1-516-512-3133

 Email: info@creative-biomart.com  Fax: 1-631-938-8127

 45-1 Ramsey Road, Shirley, NY 11967, USA

Applications	Enzyme Activity, WB, IP
Stability	≥ 1 year
Storage	Store at -80 centigrade

GENE INFORMATION

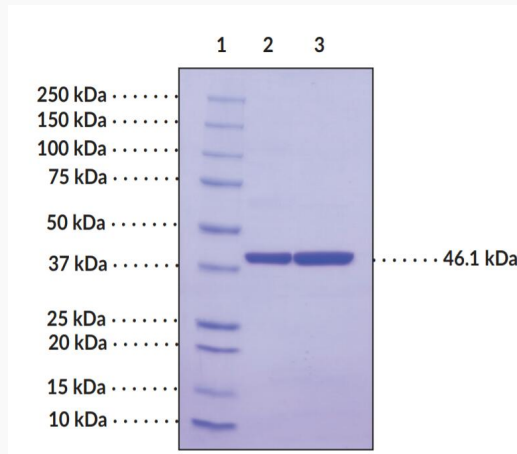
Gene Name	PAFAH2 platelet activating factor acetylhydrolase 2 [Homo sapiens (human)]
Official Symbol	PAFAH2
Synonyms	PAFAH2; platelet activating factor acetylhydrolase 2; HSD-PLA2; platelet-activating factor acetylhydrolase 2, cytoplasmic; SD-PLA2; platelet-activating factor acetylhydrolase 2, 40kDa; serine-dependent phospholipase A2
Gene ID	5051
mRNA Refseq	NM_000437
Protein Refseq	NP_000428
MIM	602344
UniProt ID	Q99487

 Tel: 1-631-559-9269 1-516-512-3133

 Email: info@creative-biomart.com  Fax: 1-631-938-8127

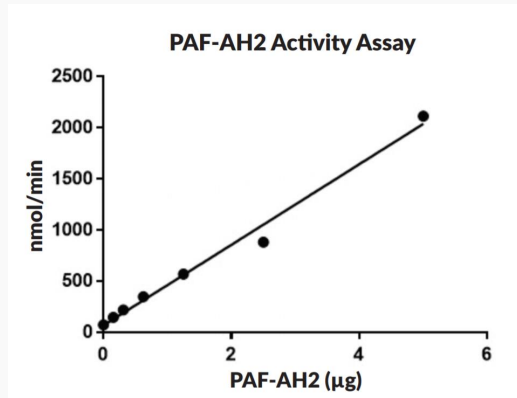
 45-1 Ramsey Road, Shirley, NY 11967, USA

**SDS-PAGE of
PAFAH2**



Lane 1: MW Markers, Lane 2: PAF-AH2 (2 g), Lane 3: PAF-AH2 (4 g).
Representative gel image shown; actual purity may vary between each batch.

Activity Assay



PAF-AH2 Activity Assay

Tel: 1-631-559-9269 1-516-512-3133

Email: info@creative-biomart.com Fax: 1-631-938-8127

45-1 Ramsey Road, Shirley, NY 11967, USA