

Recombinant Human PAFAH2 Protein (Met1-Leu392), N-His tagged

Cat. No. PAFAH2-4791H Lot. No. (See product label)

SPECIFICATION

Product Overview	Recombinant human PAFAH2 (Met1-Leu392) fused with the N-His tag was expressed in E. coli.
Species	Human
Source	E.coli
ProteinLength	Met1-Leu392
Form	Lyophilized powder/frozen liquid
Molecular Mass	46.35 kDa
Purity	>90% as determined by SDS-PAGE.
Notes	For research use only.
Storage	Use a manual defrost freezer and avoid repeated freeze thaw cycles. Store at 2 to 8 centigrade for one week. Store at -20 to -80 centigrade for twelve months from the date of receipt.
Storage Buffer	0.01M PBS, pH 7.4, 0.02% NLS
Reconstitution	Reconstitute in sterile water for a stock solution.

 Tel: 1-631-559-9269 1-516-512-3133

 Email: info@creative-biomart.com  Fax: 1-631-938-8127

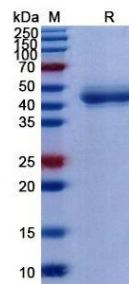
 45-1 Ramsey Road, Shirley, NY 11967, USA

Shipping

They are shipped out with dry ice/blue ice unless customers require otherwise.

GENE INFORMATION

Gene Name	PAFAH2 platelet-activating factor acetylhydrolase 2, 40kDa [Homo sapiens (human)]
Official Symbol	PAFAH2
Synonyms	PAFAH2; platelet-activating factor acetylhydrolase 2, 40kDa; platelet activating factor acetylhydrolase 2 (40kD); platelet-activating factor acetylhydrolase 2, cytoplasmic; HSD PLA2; SD-PLA2; serine-dependent phospholipase A2; HSD-PLA2; FLJ26025;
Gene ID	5051
mRNA Refseq	NM_000437
Protein Refseq	NP_000428
MIM	602344
UniProt ID	Q99487

SDS-PAGE


Tel: 1-631-559-9269 1-516-512-3133

Email: info@creative-biomart.com Fax: 1-631-938-8127

45-1 Ramsey Road, Shirley, NY 11967, USA