

Recombinant Human PAH protein(2-452aa), His-tagged

Cat. No. PAH-1820H Lot. No. (See product label)

SPECIFICATION

Product Overview	Recombinant Human PAH protein(P00439)(2-452aa), fused with N-terminal His tag, was expressed in E.coli.
Species	Human
Source	E.coli
ProteinLength	2-452aa
Form	If the delivery form is liquid, the default storage buffer is Tris/PBS-based buffer, 5%-50% glycerol. If the delivery form is lyophilized powder, the buffer before lyophilization is Tris/PBS-based buffer, 6% Trehalose, pH 8.0.
Molecular Mass	55.8 kDa
Purity	Greater than 85% as determined by SDS-PAGE.
Storage	Store at -20°C/-80°C upon receipt, aliquoting is necessary for mutiple use. Avoid repeated freeze-thaw cycles.
Reconstitution	We recommend that this vial be briefly centrifuged prior to opening to bring the contents to the bottom. Please reconstitute protein in deionized sterile water to a concentration of 0.1-1.0 mg/mL. We recommend to add 5-50% of glycerol (final concentration) and aliquot for long-term storage at -20°C/-80°C.

 Tel: 1-631-559-9269 1-516-512-3133

 Email: info@creative-biomart.com  Fax: 1-631-938-8127

 45-1 Ramsey Road, Shirley, NY 11967, USA



AA Sequence

STAVLENPGLGRKLSDFGQETSYIEDNCNQNNGAISLIFSLKEEVGALAKVLRLFEEND
VNLTHIESRPSRLKKDEYEFFTHLDKRSLPALTNIIKILRHDIGATVHELSDKDKKDTVP
WFPRTIQELDRFANQILSYGAELDADHPGFKDPVYRARRKQFADIAYNYRHGQPIPR
VEYMEEEEKKTWGTVFKTLKSLYKTHACYEYNHIFPILLEKYCGFHEDNIPQLEDVVSQF
LQTCTGFRLRPVAGLLSSRDFLGGLAFRVFHCTQYIRHGSKPMYTPEPDICHELLGH
VPLFSDRSFAQFSQEIGLASLGAPDEYIEKLATIWFTVEFGLCKQGDSIKAYGAGLL
SSFGELQYCLSEKPKLLPLELEKTAIQNYTVTEFQPLYYYVAESFNDAKEKVRNFAATI
PRPFSVRYDPYTQRIEVLDNTQQLKILADSINSEIGILCSALQKIK

GENE INFORMATION

Gene Name PAH phenylalanine hydroxylase [Homo sapiens]

Official Symbol PAH

Synonyms PAH; phenylalanine hydroxylase; phenylalanine-4-hydroxylase; PH; phenylalanine 4 monooxygenase; phe-4-monooxygenase; phenylalanine 4-monooxygenase; PKU; PKU1;

Gene ID 5053

mRNA Refseq NM_000277

Protein Refseq NP_000268

MIM 612349

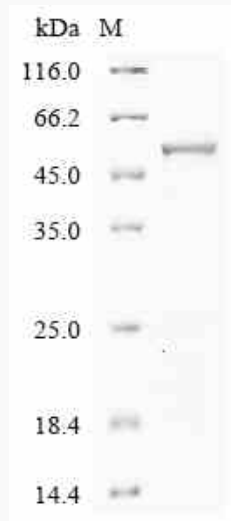
UniProt ID P00439

Tel: 1-631-559-9269 1-516-512-3133

Email: info@creative-biomart.com Fax: 1-631-938-8127

45-1 Ramsey Road, Shirley, NY 11967, USA

SDS-PAGE



 Tel: 1-631-559-9269 1-516-512-3133

 Email: info@creative-biomart.com  Fax: 1-631-938-8127

 45-1 Ramsey Road, Shirley, NY 11967, USA