

## Recombinant Human PAH protein(2-452aa)

**Cat. No.** PAH-5510H    **Lot. No.** (See product label)

### SPECIFICATION

<b>Product Overview</b>	Recombinant Human PAH protein(P00439)(2-452aa) was expressed in E.coli.
<b>Species</b>	Human
<b>Source</b>	E.coli
<b>ProteinLength</b>	2-452aa
<b>Form</b>	If the delivery form is liquid, the default storage buffer is Tris/PBS-based buffer, 5%-50% glycerol. If the delivery form is lyophilized powder, the buffer before lyophilization is Tris/PBS-based buffer, 6% Trehalose, pH 8.0.
<b>Molecular Mass</b>	51.9 kDa
<b>Purity</b>	Greater than 90% as determined by SDS-PAGE.
<b>Storage</b>	Store at -20°C/-80°C upon receipt, aliquoting is necessary for mutiple use. Avoid repeated freeze-thaw cycles.
<b>Reconstitution</b>	We recommend that this vial be briefly centrifuged prior to opening to bring the contents to the bottom. Please reconstitute protein in deionized sterile water to a concentration of 0.1-1.0 mg/mL. We recommend to add 5-50% of glycerol (final concentration) and aliquot for long-term storage at -20°C/-80°C.
<b>AA Sequence</b>	STAVLENPGLGRKLSDFGQETSYIEDNCCNQNGAISLIFSLKEEVGALAKVLRLFEEND

 Tel: 1-631-559-9269    1-516-512-3133

 Email: [info@creative-biomart.com](mailto:info@creative-biomart.com)     Fax: 1-631-938-8127

 45-1 Ramsey Road, Shirley, NY 11967, USA

VNLTHIESRPSRLKKDEYEFFTHLDKRSLPALTNIILRHDIGATVHELSDKDDKDTVP  
 WFPRTIQELDRFANQILSYGAELDADHPGFKDPVYRARRKQFADIAYNYRHGQPIPR  
 VEYMEEEEKKTWGTVFKTLKSLYKTHACYEYNHIFPILLEKYCGFHEDNIPQLEDVVSQF  
 LQCTCTGFRLRPVAGLLSSRDFLGGLAFRVFHCTQYIRHGSKPMYTPPEPDICHELLGH  
 VPLFSDRSFAQFSQEIGLASLGAPDEYIEKLATIWFTVEFGLCKQGDSIKAYGAGLL  
 SSGELQYCLSEKPKLLPLELEKTAIQNYTVTEFQPLYYYVAESFNDAKEKVRNFAATI  
 PRPFSVRYDPYTQRIEVLNNTQQLKILADSINSEIGILCSALQKIK

## GENE INFORMATION

**Gene Name** [PAH phenylalanine hydroxylase \[ Homo sapiens \]](#)

**Official Symbol** [PAH](#)

**Synonyms** PAH; phenylalanine hydroxylase; phenylalanine-4-hydroxylase; PH; phenylalanine 4 monooxygenase; phe-4-monooxygenase; phenylalanine 4-monooxygenase; PKU; PKU1;

**Gene ID** [5053](#)

**mRNA Refseq** [NM\\_000277](#)

**Protein Refseq** [NP\\_000268](#)

**MIM** [612349](#)

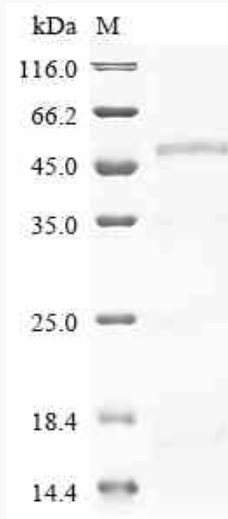
**UniProt ID** [P00439](#)

 Tel: 1-631-559-9269 1-516-512-3133

 Email: [info@creative-biomart.com](mailto:info@creative-biomart.com)  Fax: 1-631-938-8127

 45-1 Ramsey Road, Shirley, NY 11967, USA

**SDS-PAGE**



 Tel: 1-631-559-9269 1-516-512-3133

 Email: [info@creative-biomart.com](mailto:info@creative-biomart.com)  Fax: 1-631-938-8127

 45-1 Ramsey Road, Shirley, NY 11967, USA