

# Recombinant Human PAK1 Protein, Myc/DDK-tagged, C13 and N15-labeled

Cat. No. PAK1-5422H Lot. No. (See product label)

## SPECIFICATION

### Product Overview

PAK1 MS Standard C13 and N15-labeled recombinant protein (NP\_001122092) with a C-terminal MYC/DDK tag, was expressed in HEK293 cells.

### Species

Human

### Source

HEK293

### Description

This gene encodes a family member of serine/threonine p21-activating kinases, known as PAK proteins. These proteins are critical effectors that link RhoGTPases to cytoskeleton reorganization and nuclear signaling, and they serve as targets for the small GTP binding proteins Cdc42 and Rac. This specific family member regulates cell motility and morphology. Alternatively spliced transcript variants encoding different isoforms have been found for this gene.

### Molecular Mass

61.5 kDa

### AA Sequence

MSNNGLDIQDKPPAPPMRNTSTMIGAGSKDAGTLNHGSKPLPPNPEEKKKKDRFYR  
SILPGDKTNKKKEKERPEISLPSDFEHTIHVGFDAVTGFTGMPEQWARLLQTSNITK  
SEQKKNPQAVLDVLEFYNSKKTNSQKYMSFTDKSAEDYNSSNALNVKAVSETPAV  
PPVSEDEDDDDDDATPPPVIAPRPEHTKSVYTRSVIEPLPVTPTRDVATSPISPTENN  
TTPPDALTRNTEKQKKKPKMSDEEILEKLRSIVSVGDPKKKYTRFEKIGQGASGTVYT  
AMDVATGQEVAIKQMNLQQQPKKELIINEILVMRENKNPNIVNYLDSYLVGDELWVV  
MEYLAGGSLTDVVTETCMDEGQIAAVCRECLQALEFLHSNQVIHRDIKSDNILLGMD

Tel: 1-631-559-9269 1-516-512-3133

Email: [info@creative-biomart.com](mailto:info@creative-biomart.com) Fax: 1-631-938-8127

45-1 Ramsey Road, Shirley, NY 11967, USA

GSVKLTDFGFCAQITPEQSKRSTMVGTPYWMAPEVVTRKAYGPKVDIWSLGIMAIE  
 MIEGEPYLNENPLRALYLIATNGTPELQNPEKLSAIFRDFLNRCLLEMDVEKRGSKE  
 LLQVRKLRVQVFSNFSMIAASIPEDCQAPLQPHSTDCSTRTRPLEQKLISEEDLAAN  
 DILDYKDDDDKV

**Purity** > 80% as determined by SDS-PAGE and Coomassie blue staining

**Stability** Stable for 3 months from receipt of products under proper storage and handling conditions.

**Storage** Store at -80 centigrade. Avoid repeated freeze-thaw cycles.

**Concentration** 50 µg/mL as determined by BCA

**Storage Buffer** 100 mM glycine, 25 mM Tris-HCl, pH 7.3.

## GENE INFORMATION

**Gene Name** PAK1 p21 (RAC1) activated kinase 1 [ Homo sapiens (human) ]

**Official Symbol** PAK1

**Synonyms** PAK1; p21 protein (Cdc42/Rac)-activated kinase 1; p21/Cdc42/Rac1 activated kinase 1 (STE20 homolog, yeast), p21/Cdc42/Rac1 activated kinase 1 (yeast Ste20 related); serine/threonine-protein kinase PAK 1; STE20 homolog; yeast; p65-PAK; alpha-PAK; STE20 homolog, yeast; p21/Cdc42/Rac1-activated kinase 1 (yeast Ste20-related); p21/Cdc42/Rac1-activated kinase 1 (STE20 homolog, yeast); PAKalpha; MGC130000; MGC130001;

**Gene ID** 5058

 Tel: 1-631-559-9269 1-516-512-3133

 Email: [info@creative-biomart.com](mailto:info@creative-biomart.com)  Fax: 1-631-938-8127

 45-1 Ramsey Road, Shirley, NY 11967, USA

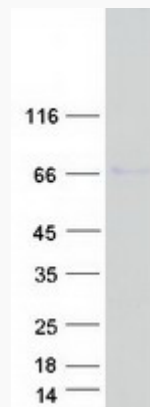
mRNA Refseq [NM\\_001128620](#)

Protein Refseq [NP\\_001122092](#)

MIM [602590](#)

UniProt ID [Q13153](#)

SDS-PAGE



 Tel: 1-631-559-9269 1-516-512-3133

 Email: [info@creative-biomart.com](mailto:info@creative-biomart.com)  Fax: 1-631-938-8127

 45-1 Ramsey Road, Shirley, NY 11967, USA