

Recombinant Human PAK1 Protein, His-tagged

Cat. No. PAK1-768H **Lot. No.** (See product label)

SPECIFICATION

Product Overview	Recombinant Human PAK1(Glu252~Cys501) fused with His tag at N-terminal was expressed in E. coli.
Species	Human
Source	E.coli
ProteinLength	Glu252~Cys501
Description	This gene encodes a family member of serine/threonine p21-activating kinases, known as PAK proteins. These proteins are critical effectors that link RhoGTPases to cytoskeleton reorganization and nuclear signaling, and they serve as targets for the small GTP binding proteins Cdc42 and Rac. This specific family member regulates cell motility and morphology. Alternatively spliced transcript variants encoding different isoforms have been found for this gene.
Form	PBS, pH7.4, containing 0.01% SKL, 1mM DTT, 5% Trehalose and Proclin300.
Molecular Mass	31.9kDa
Endotoxin	<1.0EU per 1g (determined by the LAL method)
Purity	> 95%
Applications	Positive Control; Immunogen; SDS-PAGE; WB.

 Tel: 1-631-559-9269 1-516-512-3133

 Email: info@creative-biomart.com  Fax: 1-631-938-8127

 45-1 Ramsey Road, Shirley, NY 11967, USA

If bio-activity of the protein is needed, please check active protein.

Stability

The thermal stability is described by the loss rate. The loss rate was determined by accelerated thermal degradation test, that is, incubate the protein at 37 centigrade for 48h, and no obvious degradation and precipitation were observed. The loss rate is less than 5% within the expiration date under appropriate storage condition.

Storage

Avoid repeated freeze/thaw cycles. Store at 2-8 centigrade for one month. Aliquot and store at -80 centigrade for 12 months.

Reconstitution

Reconstitute in PBS or others.

GENE INFORMATION

Gene Name

PAK1 p21 protein (Cdc42/Rac)-activated kinase 1 [Homo sapiens]

Official Symbol

PAK1

Synonyms

PAK1; p21 protein (Cdc42/Rac)-activated kinase 1; p21/Cdc42/Rac1 activated kinase 1 (STE20 homolog, yeast) , p21/Cdc42/Rac1 activated kinase 1 (yeast Ste20 related); serine/threonine-protein kinase PAK 1; STE20 homolog; yeast; p65-PAK; alpha-PAK; STE20 homolog, yeast; p21/Cdc42/Rac1-activated kinase 1 (yeast Ste20-related); p21/Cdc42/Rac1-activated kinase 1 (STE20 homolog, yeast); PAKalpha; MGC130000; MGC130001;

Gene ID

5058

mRNA Refseq

NM_001128620

Protein Refseq

NP_001122092

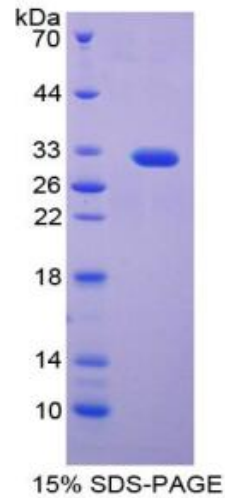
 Tel: 1-631-559-9269 1-516-512-3133

 Email: info@creative-biomart.com  Fax: 1-631-938-8127

 45-1 Ramsey Road, Shirley, NY 11967, USA

MIM 602590

UniProt ID Q13153



 Tel: 1-631-559-9269 1-516-512-3133

 Email: info@creative-biomart.com  Fax: 1-631-938-8127

 45-1 Ramsey Road, Shirley, NY 11967, USA