

Recombinant Human PAK1 Protein, GST-tagged

Cat. No. PAK1-821H Lot. No. (See product label)

SPECIFICATION

Product Overview Recombinant Human PAK1 protein Cdc42/Rac interactive binding region (AA 56-141) was expressed in E. coli with GST tag.

Species Human

Source E.coli

ProteinLength 56-141 a.a.

Description Members of the Rac/Rho subfamily of small GTPases or G-proteins are key regulators of numerous processes related to cytoskeletal dynamics. For example, Rac1/2 and cdc42 (and other closely related members) regulate cell migration, contraction and cell volume, among other features, through the control of the cortical actin cytoskeleton. Cdc42 is furthermore a major player in the establishment of a polarized phenotype in numerous specialized cell types whereas Rac is a critical regulator of NADPH oxidases and concomitant ROS production. In common with most other small G-proteins, cellular Rac and Cdc42 cycle between an inactive GDP-bound and an active GTP bound state. The CRIB domain of the Rac-effector PAK1 discriminates between these two conformations and can be used to isolate active Rac/Cdc42GTP complexes out of cell extracts.

Form PBS

Molecular Mass 35 kDa

 Tel: 1-631-559-9269 1-516-512-3133

 Email: info@creative-biomart.com  Fax: 1-631-938-8127

 45-1 Ramsey Road, Shirley, NY 11967, USA

Purity > 90 % (SDS PAGE), 30-50 % degradation (Please note: effective concentration of full-length polypeptide takes into account protein degradation that commonly accounts for 30-50 % of total protein)

Storage Store at -80 centigrade, avoid freeze/thaw cycles., aliquot in convenient format upon first thawing.

GENE INFORMATION

Gene Name PAK1 p21 protein (Cdc42/Rac)-activated kinase 1 [Homo sapiens]

Official Symbol PAK1

Synonyms PAKalpha; PAK1

Gene ID 5058

mRNA Refseq NM_001128620.1

Protein Refseq NP_001122092.1

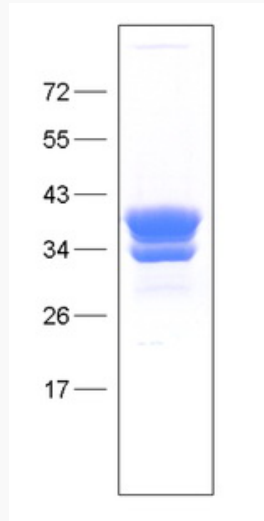
MIM 602590

UniProt ID Q13153

 Tel: 1-631-559-9269 1-516-512-3133

 Email: info@creative-biomart.com  Fax: 1-631-938-8127

 45-1 Ramsey Road, Shirley, NY 11967, USA



 Tel: 1-631-559-9269 1-516-512-3133

 Email: info@creative-biomart.com  Fax: 1-631-938-8127

 45-1 Ramsey Road, Shirley, NY 11967, USA