

# Active Recombinant Full Length Human PAK3 Protein, GST-tagged

Cat. No. PAK3-3520HF Lot. No. (See product label)

## SPECIFICATION

<b>Product Overview</b>	Full-length human PAK3 [1-544(end) amino acids of accession number NP_002569.1] was expressed as N-terminal GST-fusion protein (88 kDa) using baculovirus expression system. GST-PAK3 was purified by using glutathione sepharose chromatography.
<b>Species</b>	Human
<b>Source</b>	Sf21 Cells
<b>ProteinLength</b>	1-544
<b>Form</b>	50 mM Tris-HCl, 150 mM NaCl, 0.05% Brij35, 1 mM DTT, 10% glycerol, pH7.5
<b>Bio-activity</b>	The activity was measured by off-chip mobility shift assay(MSA). The enzyme was incubated with fluorescence-labeled substrate and Mg(or Mn)/ATP. The phosphorylated and unphosphorylated substrates were separated and detected by MSA device.
<b>Purity</b>	93%
<b>Applications</b>	SDS-PAGE
<b>Storage</b>	Store at -80C. Avoid repeating freeze-thaws.

 Tel: 1-631-559-9269 1-516-512-3133

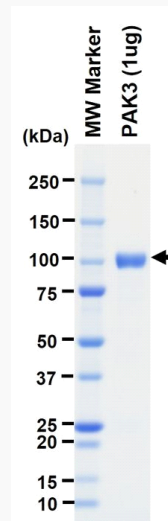
 Email: [info@creative-biomart.com](mailto:info@creative-biomart.com)  Fax: 1-631-938-8127

 45-1 Ramsey Road, Shirley, NY 11967, USA

## GENE INFORMATION

<b>Gene Name</b>	p21 protein (Cdc42/Rac)-activated kinase 3
<b>Official Symbol</b>	PAK3
<b>Synonyms</b>	PAK3;ARA;MRX30;MRX47;OPHN3;PAK-3;PAK3beta;bPAK;beta-PAK;hPAK3
<b>Protein Refseq</b>	<a href="#">NP_002569.1</a>
<b>UniProt ID</b>	<a href="#">O75914</a>

### SDS-PAGE

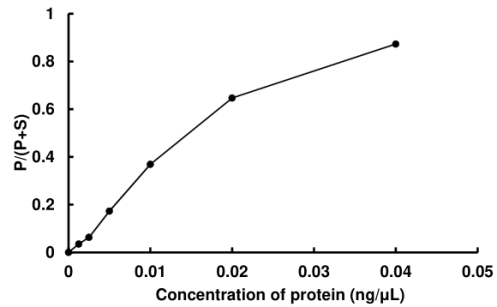


The purity was assessed by SDS-PAGE/CBB staining.

Tel: 1-631-559-9269 1-516-512-3133

Email: [info@creative-biomart.com](mailto:info@creative-biomart.com) Fax: 1-631-938-8127

45-1 Ramsey Road, Shirley, NY 11967, USA

**Activity data****Activity data**

The activity was measured by off-chip mobility shift assay(MSA). The enzyme was incubated with fluorescence-labeled substrate and Mg(or Mn)/ATP. The phosphorylated and unphosphorylated substrates were separated and detected by MSA device.

 Tel: 1-631-559-9269 1-516-512-3133

 Email: [info@creative-biomart.com](mailto:info@creative-biomart.com)  Fax: 1-631-938-8127

 45-1 Ramsey Road, Shirley, NY 11967, USA