

Recombinant Human PAK6 protein, GST-tagged

Cat. No. PAK6-32H Lot. No. (See product label)

SPECIFICATION

Product Overview	Recombinant Human PAK6(1 a.a. - 681 a.a.) fused with GST tag at N-terminal was expressed in Wheat Germ.
Species	Human
Source	Wheat Germ
ProteinLength	1-681 a.a.
Description	This gene encodes a member of a family of p21-stimulated serine/threonine protein kinases, which contain an amino-terminal Cdc42/Rac interactive binding (CRIB) domain and a carboxyl-terminal kinase domain. These kinases function in a number of cellular processes, including cytoskeleton rearrangement, apoptosis, and the mitogen-activated protein (MAP) kinase signaling pathway. The protein encoded by this gene interacts with androgen receptor (AR) and translocates to the nucleus, where it is involved in transcriptional regulation. Changes in expression of this gene have been linked to prostate cancer. Alternative splicing results in multiple transcript variants
Form	50 mM Tris-HCl, 10 mM reduced Glutathione, pH=8.0 in the elution buffer.
Molecular Mass	101.3 kDa
AA Sequence	MFRKKKKKRPEISAPQNFQHRVHTSFDPKEGKFVGLPPQWQNILDTLRRPKPVVDP SRITRVQLQPMKTVVRGSAMPVDGYISGLLNDIQKLSVISSNTLRGRSPTSRRRAQS

 Tel: 1-631-559-9269 1-516-512-3133

 Email: info@creative-biomart.com  Fax: 1-631-938-8127

 45-1 Ramsey Road, Shirley, NY 11967, USA

LGLLGDEHWATDPDMYLQSPQSERTDPHGLYLSCNGGTPAGHKQMPWPEPQSPR
 VLPNGLAAKAQSLGPAEFQGASQRCLQLGACLQSSPPGASPTGTNRHGMKAAKH
 GSEEARPQSCLVGSATGRPGGEGSPSPKTRESSLKRRLFRRSMFLSTAATAPPSSSK
 PGPPPQSKPNSSFRPPQKDNPPSLVAKAQSLPSDQPVGTFSPLTTSDTSSPQKSLR
 TAPATGQLPGRSSPAGSPRTWHAQISTSNLYLPQDPTVAKGALAGEDTGVVTHEQF
 KAALRMVVDQGDPRLLLLDSYVKIGEGSTGIVCLAREKHSGRQVAVKMMDLRKQQR
 RELLFNEVVIMRDYQHFNVVEMYKSYLVGEELWVLMFLQGGALTDIVSQVRLNEE
 QIATVCEAVLQALAYLHAQGVHRDIKSDSILLTLDGRVKLSDFGFCQAQISKDVPKRKS
 LVGTPYWMAPEVISRSLYATEVDIWSLGIMVIEMVDGEPYPFSDSPVQAMKRLRDSP
 PPKLKNSHKVSPVLRDFLERMLVRDPQERATAQELLDHPFLLQTGLPECLVPLIQLY
 RKQTSTC

Applications

Enzyme-linked Immunoabsorbent Assay; Western Blot (Recombinant protein);
 Antibody Production; Protein Array

Notes

Best use within three months from the date of receipt of this protein.

Storage

Store at -80 centigrade. Aliquot to avoid repeated freezing and thawing.

GENE INFORMATION

Gene Name

PAK6 p21 protein (Cdc42/Rac)-activated kinase 6 [Homo sapiens]

Official Symbol

PAK6

Synonyms

PAK6; p21 protein (Cdc42/Rac)-activated kinase 6; p21(CDKN1A) activated kinase 6;
 serine/threonine-protein kinase PAK 6; PAK5; PAK-5; PAK-6; p21-activated kinase 6;
 p21(CDKN1A)-activated kinase 6; p21-activated protein kinase 6;

Gene ID

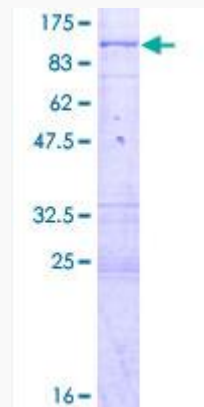
56924

 Tel: 1-631-559-9269 1-516-512-3133

 Email: info@creative-biomart.com  Fax: 1-631-938-8127

 45-1 Ramsey Road, Shirley, NY 11967, USA

mRNA Refseq	NM_020168
Protein Refseq	NP_064553
MIM	608110
UniProt ID	Q9NQU5
Chromosome Location	15q14
Pathway	Activation of Rac, organism-specific biosystem; Androgen Receptor Signaling Pathway, organism-specific biosystem; Axon guidance, organism-specific biosystem; Axon guidance, conserved biosystem; Axon guidance, organism-specific biosystem; Developmental Biology, organism-specific biosystem; ErbB signaling pathway, organism-specific biosystem;
Function	ATP binding; nucleotide binding; protein serine/threonine kinase activity;



Tel: 1-631-559-9269 1-516-512-3133

Email: info@creative-biomart.com Fax: 1-631-938-8127

45-1 Ramsey Road, Shirley, NY 11967, USA