

Active Recombinant Full Length Human PAK6 Protein, GST-tagged

Cat. No. PAK6-9312HF **Lot. No.** (See product label)

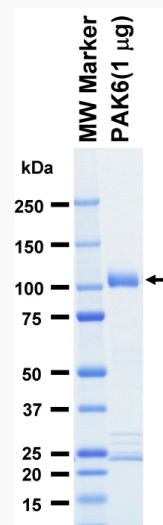
SPECIFICATION

| | |
|-------------------------|--|
| Product Overview | Full-length human PAK6 [1-681(end) amino acids of accession number NP_064553.1] was expressed as N-terminal GST-fusion protein (102 kDa) using baculovirus expression system. GST-PAK6 was purified by using glutathione sepharose chromatography. |
| Species | Human |
| Source | Sf21 Cells |
| ProteinLength | 1-681 |
| Form | 50 mM Tris-HCl, 150 mM NaCl, 0.05% Brij35, 1 mM DTT, 10% glycerol, pH7.5 |
| Bio-activity | The activity was measured by off-chip mobility shift assay. The enzyme was incubated with fluorescence-labeled substrate and Mg(or Mn)/ATP. The phosphorylated and unphosphorylated substrates were separated and detected by LabChip™3000. |
| Purity | 72% |
| Applications | SDS-PAGE |
| Storage | Store at -80C. Avoid repeating freeze-thaws. |



 Tel: 1-631-559-9269 1-516-512-3133

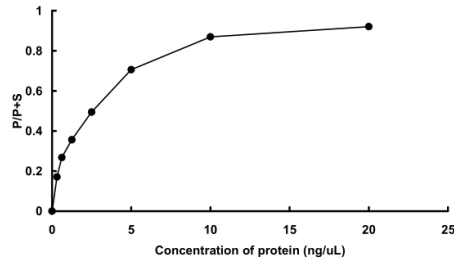
 Email: info@creative-biomart.com  Fax: 1-631-938-8127

 45-1 Ramsey Road, Shirley, NY 11967, USA

GENE INFORMATION**Gene Name** p21 protein (Cdc42/Rac)-activated kinase 6**Official Symbol** PAK6**Synonyms** PAK6;PAK5**Protein Refseq** [NP_064553.1](#)**UniProt ID** [Q9NQ5](#)**SDS-PAGE**

The purity was assessed by SDS-PAGE/CBB staining.

 Tel: 1-631-559-9269 1-516-512-3133 Email: info@creative-biomart.com  Fax: 1-631-938-8127 45-1 Ramsey Road, Shirley, NY 11967, USA

Activity data**Activity data**

The activity was measured by off-chip mobility shift assay. The enzyme was incubated with fluorescence-labeled substrate and Mg(or Mn)/ATP. The phosphorylated and unphosphorylated substrates were separated and detected by LabChip™3000.

Tel: 1-631-559-9269 1-516-512-3133

Email: info@creative-biomart.com Fax: 1-631-938-8127

45-1 Ramsey Road, Shirley, NY 11967, USA