

## Recombinant Human PALB2 Protein, His-tagged

Cat. No. PALB2-37H Lot. No. (See product label)

### SPECIFICATION

<b>Product Overview</b>	Purified recombinant protein of Human partner and localizer of BRCA2 (PALB2), Met1-Val287, with N-terminal His tag, expressed in E. coli, 50ug
<b>Species</b>	Human
<b>Source</b>	E.coli
<b>ProteinLength</b>	1-287 a.a.
<b>Description</b>	This gene encodes a protein that may function in tumor suppression. This protein binds to and colocalizes with the breast cancer 2 early onset protein (BRCA2) in nuclear foci and likely permits the stable intranuclear localization and accumulation of BRCA2.
<b>Molecular Mass</b>	32.5 kDa
<b>Purity</b>	> 80 % as determined by SDS-PAGE and Coomassie blue staining
<b>Stability</b>	Stable for 12 months from the date of receipt of the product under proper storage and handling conditions. Avoid repeated freeze-thaw cycles.
<b>Storage</b>	Store at -80 centigrade.
<b>Concentration</b>	> 50 µg/mL as determined by microplate BCA method

 Tel: 1-631-559-9269 1-516-512-3133

 Email: [info@creative-biomart.com](mailto:info@creative-biomart.com)  Fax: 1-631-938-8127

 45-1 Ramsey Road, Shirley, NY 11967, USA

**Storage Buffer** 25mM Tris, pH8.0, 150 mM NaCl, 10 % glycerol

## GENE INFORMATION

**Gene Name** PALB2 partner and localizer of BRCA2 [ Homo sapiens (human) ]

**Official Symbol** PALB2

**Synonyms** PALB2; partner and localizer of BRCA2; FANCN; PNCA3; partner and localizer of BRCA2; mutant partner and localizer of BRCA2; truncated partner and localizer of BRCA2

**Gene ID** 79728

**mRNA Refseq** NM\_024675

**Protein Refseq** NP\_078951

**MIM** 610355

**UniProt ID** Q86YC2

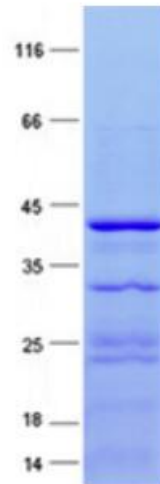
 Tel: 1-631-559-9269 1-516-512-3133

 Email: [info@creative-biomart.com](mailto:info@creative-biomart.com)  Fax: 1-631-938-8127

 45-1 Ramsey Road, Shirley, NY 11967, USA



SDS-PAGE



Tel: 1-631-559-9269 1-516-512-3133

Email: [info@creative-biomart.com](mailto:info@creative-biomart.com) Fax: 1-631-938-8127

45-1 Ramsey Road, Shirley, NY 11967, USA