

## Recombinant Human PALM protein, His-tagged

**Cat. No.** PALM-35H    **Lot. No.** (See product label)

### SPECIFICATION

<b>Product Overview</b>	Recombinant Human PALM(1-387aa) fused with His tag at N-terminal was expressed in E. coli.
<b>Species</b>	Human
<b>Source</b>	E.coli
<b>ProteinLength</b>	1-387 a.a.
<b>Description</b>	PALM is a member of the paralemmin protein family. The product of this gene is a prenylated and palmitoylated phosphoprotein that associates with the cytoplasmic face of plasma membranes and is implicated in plasma membrane dynamics in neurons and other cell types. Several alternatively spliced transcript variants have been identified, but the full-length nature of only two transcript variants has been determined.
<b>Form</b>	Liquid. In 20mM Tris-HCl buffer (pH 8.0) containing 0.15M NaCl, 10% glycerol, 1mM DTT
<b>Molecular Mass</b>	44.5 kDa (410aa) confirmed by MALDI-TOF (Molecular size on SDS-PAGE will appear higher)
<b>Purity</b>	> 85% by SDS - PAGE
<b>Storage</b>	Can be stored at +4 centigrade short term (1-2 weeks). For long term storage, aliquot

 Tel: 1-631-559-9269    1-516-512-3133

 Email: [info@creative-biomart.com](mailto:info@creative-biomart.com)     Fax: 1-631-938-8127

 45-1 Ramsey Road, Shirley, NY 11967, USA

and store at -20 centigrade or -70 centigrade. Avoid repeated freezing and thawing cycles.

**Concentration** 0.5 mg/ml (determined by Bradford assay)

## GENE INFORMATION

**Gene Name** PALM paralemmin [ Homo sapiens ]

**Official Symbol** PALM

**Synonyms** PALM; paralemmin; paralemmin-1; KIAA0270;

**Gene ID** 5064

**mRNA Refseq** NM\_002579

**Protein Refseq** NP\_002570

**MIM** 608134

**UniProt ID** O75781

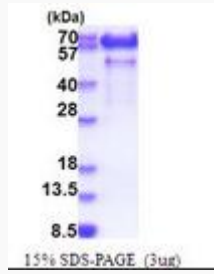
**Chromosome Location** 19p13.3

**Function** D3 dopamine receptor binding; protein binding;

 Tel: 1-631-559-9269 1-516-512-3133

 Email: [info@creative-biomart.com](mailto:info@creative-biomart.com)  Fax: 1-631-938-8127

 45-1 Ramsey Road, Shirley, NY 11967, USA



 Tel: 1-631-559-9269 1-516-512-3133

 Email: [info@creative-biomart.com](mailto:info@creative-biomart.com)  Fax: 1-631-938-8127

 45-1 Ramsey Road, Shirley, NY 11967, USA