

Recombinant Human PAMR1 Protein, GST-tagged

Cat. No. PAMR1-2660H Lot. No. (See product label)

SPECIFICATION

Product Overview	Human DKFZP586H2123 full-length ORF (NP_056245.2, 1 a.a. - 737 a.a.) recombinant protein with GST-tag at N-terminal.
Species	Human
Source	Wheat Germ
Description	PAMR1 (Peptidase Domain Containing Associated With Muscle Regeneration 1) is a Protein Coding gene. Diseases associated with PAMR1 include Duchenne Muscular Dystrophy. GO annotations related to this gene include calcium ion binding and serine-type endopeptidase activity. An important paralog of this gene is MASP1.
Molecular Mass	108.3 kDa
AA Sequence	MELGCWTQLGLTFLQLLLISSLPREYTVINEACPGAENIMCRECCEYDQIECVCPG KREVVGYTIPCCRNEENECDSCLIHPGCTIFENCKSCRNGSWGGLDDDFYVKGFC AECRAGWYGGDCMRCGQVLRAPKGQILLESYPLNAHCEWTIHAKPGFVIQLRFVML SLEFDYMCQYDYVEVRDGDNRDQIIKRVCGNERPAPIQSIGSSLHVLHSDGSKNF DGFHAIYEEITACSSSPCFHDGTCVLDKAGSYKCACLAGYTGQRCENLLEAGKSKIK ASEDSLVSLEERNCSDPGGPVNGYQKITGGPGLINGRHAKIGTVVSFFCNNSYVLSG NEKRTCQQNGEWSGKQPICIKACREPKISDLVRRRVLPMQVQSRETPLHQLYSAAF SKQKLQSAPT KKPALPFGDLPMGYQHLHTQLQYECISPFYRRLGSSRRTCLRTGKW SGRAPSCIPICGIENITAPKTQGLRWPWQAAIYRRTSGVHDGSLHKGAWFLVCSGA LVNERTVVVAAHCVTDLGKVTMIKTADLKVVLGKFYRDDDRDEKTIQSLQISAILHPN

Tel: 1-631-559-9269 1-516-512-3133

Email: info@creative-biomart.com Fax: 1-631-938-8127

45-1 Ramsey Road, Shirley, NY 11967, USA

YDPILLDADIAILKLLDKARISTRVQPICLAASRDLSTSFQESHITVAGWNVLADVRSPG
 FKNDTLRSGVSVVDSLLCEEQHEDHGIPVSVTDNMFCASWEPTAPSDICTAETGGI
 AAVSFPGRASPEPRWHLMGLVSWSYDKTCSHRLSTAFTKVLFPKDWIERNMK

Applications	Enzyme-linked Immunoabsorbent Assay Western Blot (Recombinant protein) Antibody Production Protein Array
Notes	Best use within three months from the date of receipt of this protein.
Storage	Store at -80 centigrade. Aliquot to avoid repeated freezing and thawing.
Storage Buffer	50 mM Tris-HCl, 10 mM reduced Glutathione, pH=8.0 in the elution buffer.

GENE INFORMATION

Gene Name	PAMR1 peptidase domain containing associated with muscle regeneration 1 [Homo sapiens (human)]
Official Symbol	PAMR1
Synonyms	PAMR1; peptidase domain containing associated with muscle regeneration 1; RAMP; FP938; DKFZP586H2123; inactive serine protease PAMR1; peptidase domain-containing protein associated with muscle regeneration 1; regeneration associated muscle protease; regeneration-associated muscle protease homolog; Peptidase Domain Containing Associated With Muscle Regeneration 1; Peptidase Domain-Containing Protein Associated With Muscle Regeneration 1; Regeneration-Associated Muscle Protease Homolog; Regeneration-Associated Muscle Protease; Regeneration Associated Muscle Protease; Inactive Serine Protease PAMR1

 Tel: 1-631-559-9269 1-516-512-3133

 Email: info@creative-biomart.com  Fax: 1-631-938-8127

 45-1 Ramsey Road, Shirley, NY 11967, USA

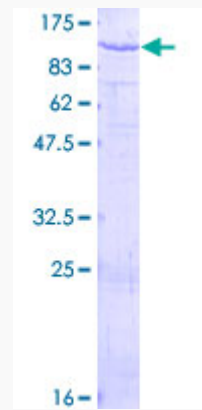
Gene ID 25891

mRNA Refseq NM_001001991

Protein Refseq NP_001001991

UniProt ID Q6UXH9

Quality Control
Testing



12.5% SDS-PAGE Stained with Coomassie Blue.

Tel: 1-631-559-9269 1-516-512-3133

Email: info@creative-biomart.com Fax: 1-631-938-8127

45-1 Ramsey Road, Shirley, NY 11967, USA