

# Recombinant Human PAN2 Protein, Myc/DDK-tagged, C13 and N15-labeled

**Cat. No.** PAN2-3540H    **Lot. No.** (See product label)

## SPECIFICATION

<b>Product Overview</b>	PAN2 MS Standard C13 and N15-labeled recombinant protein (NP_055686) with a C-terminal MYC/DDK tag, was expressed in HEK293 cells.
<b>Species</b>	Human
<b>Source</b>	HEK293
<b>Description</b>	This gene encodes a deadenylase that functions as the catalytic subunit of the polyadenylate binding protein dependent poly(A) nuclease complex. The encoded protein is a magnesium dependent 3' to 5' exoribonuclease that is involved in the degradation of cytoplasmic mRNAs. Alternate splicing results in multiple transcript variants.
<b>Molecular Mass</b>	135 kDa
<b>AA Sequence</b>	<p>MNFEGLDPLGLAEYAPAMHSALDPVLD AHLNPNLLQNVELDPEGVALEALPVQESVHI  MEGVYSELHSVVAE VGVPSVSHFDLHEEMLWV GSHGGHATSFFGPALERYSSFQ  VNGSDDIRQIQSLENGILFLTKNNLKYMARGGLIIFDYLLDENEDMHSLLTDSSTLLV  GGLQNHILEIDLNTVQETQKYAVETPGVTIMRQTNRFFFCGHTSGKVSLRDLRFTKV  EHEFDAFSGSLSDFDVHGNLLAACGFSSRLTGLACDRFLKVYDLRMMRAITPLQVH  VDPAFLRFIPTYTSRLAIIQSGQCQFCEPTGLANPADIFHVNVPVGPLLMTFDVSASK  QALAFGDSEGCVHLWTDSPESFPNYSRETEFALPCLVDSLPLDWSQDLLPLSLIP  VPLTTDTLLSDWPAANSAPAPRRAPPVDAEILRTMKKVGFYAPNPRTRLRNQIPY</p>

 Tel: 1-631-559-9269    1-516-512-3133

 Email: [info@creative-biomart.com](mailto:info@creative-biomart.com)     Fax: 1-631-938-8127

 45-1 Ramsey Road, Shirley, NY 11967, USA

RLKESDSEFDSFSQVTESPVGREEEP HLHMVSKKYRKVTIKYSKLGLEDFDFKHYNK  
 TLFAGLEPHIPNAYCNCMIQVLYFLEPVRCLIQNHLCQKEFCLACELGFLFHMLDLSR  
 GDPCQGNFLRAFRTIPEASALGLILADSDEASGKGNLARLIQRWNRFILTERQLHQDM  
 QELEIPQAYRGAGGSSFCSSGDSVIGQLFSCEMENCSLCRCGSETVRASSTLLFTLS  
 YPDDKTGKNYDFAQVLKRSICLDQNTQAWCDTCEKYQPTIQTRNIRHLPDILVINCEV  
 NSSKEADFWRMQAEVAFKMAVKKHGGEISKNKEFALADWKELGSPEGVLVCP SIEE  
 LKNVWLPFSIRMKMTKNKGLDVCNWTGDGEMQWGPAREEEHGVVYDLMATVV  
 HILDSRTGGSLVAHIKVGETYHQRKEGVTHQQWYLFNDFLIEPIDKHEAVQFDMNWK  
 VPAILYYVKRNLNSRYNLNIKNPIEASVLLAEASLARKQRKTHHTFIPLMLNEMPQIGD  
 LVGLDAEFVTLNEEEAELRSDGTKSTIKPSQMSVARITCVRGQGPNEGIPFIDDYIST  
 QEQVVDYLTQYSGIKPGDLDAKISSKHLTTLKSTYLKLRFLIDIGVKFVGHGLQKDFRV  
 INLMVPKDQVLDTVYLFHMPRKRMSLRFLAWYFLDLKIQGETHDSIEDARTALQLYR  
 KYLELSKNGTEPESFHKVLKGLYEKGRKMDWKVPEPEGQTSPKNAAVFSSVLALTR  
 TRPLEQKLISEEDLAANDILDYKDDDDKV

**Purity** > 80% as determined by SDS-PAGE and Coomassie blue staining

**Stability** Stable for 3 months from receipt of products under proper storage and handling conditions.

**Storage** Store at -80 centigrade. Avoid repeated freeze-thaw cycles.

**Concentration** 50 µg/mL as determined by BCA

**Storage Buffer** 100 mM glycine, 25 mM Tris-HCl, pH 7.3.

## GENE INFORMATION

**Gene Name** PAN2 poly(A) specific ribonuclease subunit PAN2 [ Homo sapiens (human) ]

**Official Symbol** PAN2

 Tel: 1-631-559-9269 1-516-512-3133

 Email: [info@creative-biomart.com](mailto:info@creative-biomart.com)  Fax: 1-631-938-8127

 45-1 Ramsey Road, Shirley, NY 11967, USA

**Synonyms**

PAN2; PAN2 poly(A) specific ribonuclease subunit homolog (*S. cerevisiae*); ubiquitin specific peptidase 52, ubiquitin specific protease 52, USP52; PAB-dependent poly(A)-specific ribonuclease subunit 2; hPAN2; KIAA0710; PAN2 homolog; PABP1 dependent poly A specific ribonuclease subunit (*S. cerevisiae*); ubiquitin specific protease 52; ubiquitin specific peptidase 52; PABP-dependent poly(A) nuclease 2; PAN2 polyA specific ribonuclease subunit; inactive ubiquitin carboxyl-terminal hydrolase 52; USP52; FLJ39360;

**Gene ID**

9924

**mRNA Refseq**

NM\_014871

**Protein Refseq**

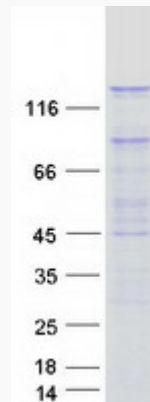
NP\_055686


**MIM**

617447

**UniProt ID**

Q504Q3

**SDS-PAGE**


 Tel: 1-631-559-9269 1-516-512-3133

 Email: [info@creative-biomart.com](mailto:info@creative-biomart.com)  Fax: 1-631-938-8127

 45-1 Ramsey Road, Shirley, NY 11967, USA