

Recombinant Human PANK1 Protein, GST-tagged

Cat. No. PANK1-34H Lot. No. (See product label)

SPECIFICATION

Product Overview	Recombinant Human PANK1(310 a.a. - 409 a.a.) fused with GST tag at N-terminal was expressed in Wheat Germ.
Species	Human
Source	Wheat Germ
ProteinLength	310 a.a. - 409 a.a.
Description	This gene encodes a member of the pantothenate kinase family. Pantothenate kinases are key regulatory enzymes in the biosynthesis of coenzyme A (CoA). The encoded protein catalyzes the first and rate-limiting enzymatic reaction in CoA biosynthesis and is regulated by CoA through feedback inhibition. Alternatively spliced transcript variants encoding multiple isoforms have been observed for this gene. This gene and an intronic miRNA on the same strand are co-regulated by the tumor suppressor p53 (see PMID 20833636).
Form	50 mM Tris-HCl, 10 mM reduced Glutathione, pH=8.0 in the elution buffer.
Molecular Mass	36.74 kDa
AA Sequence	IRFPSCAMHRFIQMGSEKNFSSLHTTLCATGGGAFKFEEDFRMIADLQLHLKLDLDC LIQGLLYVDSVGFNGKPECYYFENPTNPELCQKKPYCLDNPYP
Applications	Enzyme-linked Immunoabsorbent Assay; Western Blot (Recombinant protein);

 Tel: 1-631-559-9269 1-516-512-3133

 Email: info@creative-biomart.com  Fax: 1-631-938-8127

 45-1 Ramsey Road, Shirley, NY 11967, USA

Antibody Production; Protein Array

Notes	Best use within three months from the date of receipt of this protein.
Storage	Store at -80°C. Aliquot to avoid repeated freezing and thawing.

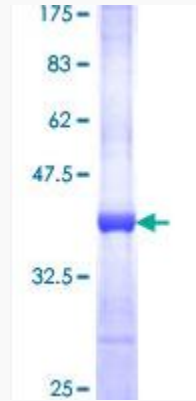
GENE INFORMATION


Gene Name	PANK1 pantothenate kinase 1 [Homo sapiens]
Official Symbol	PANK1
Synonyms	PANK1; pantothenate kinase 1; PANK, pantothenate kinase; MGC24596; PANK1a; PANK1b; pantothenic acid kinase 1; PANK;
Gene ID	53354
mRNA Refseq	NM_148977
Protein Refseq	NP_683878
MIM	606160
UniProt ID	Q8TE04

 Tel: 1-631-559-9269 1-516-512-3133


 Email: info@creative-biomart.com  Fax: 1-631-938-8127

 45-1 Ramsey Road, Shirley, NY 11967, USA



 Tel: 1-631-559-9269 1-516-512-3133

 Email: info@creative-biomart.com  Fax: 1-631-938-8127

 45-1 Ramsey Road, Shirley, NY 11967, USA