

## Active Native Human PAP

**Cat. No.** PAP-01H    **Lot. No.** (See product label)

### SPECIFICATION

<b>Product Overview</b>	Purified native Human PAP protein (> 95% pure).
<b>Species</b>	Human
<b>Source</b>	Human Seminal Fluid
<b>Description</b>	Prostatic acid phosphatase (PAP), also prostatic specific acid phosphatase (PSAP), is an enzyme produced by the prostate. It may be found in increased amounts in men who have prostate cancer or other diseases. The highest levels of acid phosphatase are found in metastasized prostate cancer.
<b>Form</b>	Supplied 0.2 micron filtered in 150mM NaCl, 9.5mM Sodium Phosphate Monobasic, 40.5mM Sodium Phosphate Dibasic, pH 7.6 with 0.05% NaN <sub>3</sub>
<b>Molecular Weight</b>	51 kDa
<b>Purification</b>	Highly pure grade; >95% pure by SDS-PAGE
<b>Bioactivity</b>	536.0U/mg
<b>Applications</b>	User optimized
<b>Storage</b>	Aliquot and store at -20°C. Avoid repeated Freeze/Thaw cycles.
<b>Pathways</b>	Riboflavin metabolism

 Tel: 1-631-559-9269    1-516-512-3133

 Email: [info@creative-biomart.com](mailto:info@creative-biomart.com)     Fax: 1-631-938-8127

 45-1 Ramsey Road, Shirley, NY 11967, USA

## GENE INFORMATION

**Gene Name** [ACPP acid phosphatase, prostate \[Homo sapiens\]](#)

**Official Symbol** [ACPP](#)

**Synonyms** ACPP; acidphosphatase,prostate; PAP; ACP3; 5'-NT; ACP-3; prostatic acid phosphatase;TMPase;5"-nucleotidase; OTTHUMP00000216106; OTTHUMP00000216107; OTTHUMP00000216108;ecto-5'-nucleotidase;thiamine monophosphatase; prostatic acid phosphatase;EC 3.1.3.2; EC 3.1.3.5

**Gene ID** [55](#)

**mRNA Refseq** [NM\\_001099](#)

**Protein Refseq** [NP\\_001090](#)

**MIM** [171790](#)

**UniProt ID** [P15309](#)

**Chromosome Location** 3q21-q23

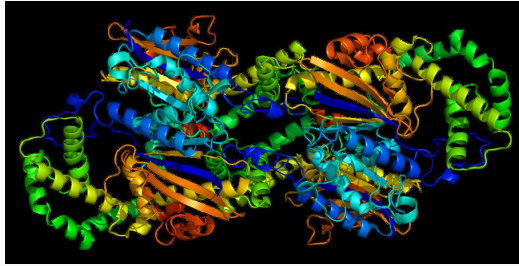
**Function** 5'-nucleotidaseactivity; acidphosphatase activity; hydrolase activity

 Tel: 1-631-559-9269 1-516-512-3133

 Email: [info@creative-biomart.com](mailto:info@creative-biomart.com)  Fax: 1-631-938-8127

 45-1 Ramsey Road, Shirley, NY 11967, USA

PDB rendering based  
on 1cvi.



 Tel: 1-631-559-9269 1-516-512-3133

 Email: [info@creative-biomart.com](mailto:info@creative-biomart.com)  Fax: 1-631-938-8127

 45-1 Ramsey Road, Shirley, NY 11967, USA