

# Recombinant Human PAPP A Protein, Myc/DDK-tagged, C13 and N15-labeled

Cat. No. PAPP A-1321H Lot. No. (See product label)

## SPECIFICATION

### Product Overview

PAPP A MS Standard C13 and N15-labeled recombinant protein (NP\_002572) with a C-terminal MYC/DDK tag, was expressed in HEK293 cells.

### Species

Human

### Source

HEK293

### Description

This gene encodes a secreted metalloproteinase which cleaves insulin-like growth factor binding proteins (IGFBPs). Following IGFBP cleavage, insulin growth factors dissociate from IGFBPs and bind to IGF receptors, resulting in activation of the IGF pathway. The encoded protein plays a role in bone formation, inflammation, wound healing and female fertility. Enhanced expression of this protein is associated with diabetic nephropathy in human patients and this protein may promote tumor invasion and growth in various human cancers.

### Molecular Mass

181.4 kDa

### AA Sequence

MRLWSWVLHLGLLSAALGCGLAERPRRRARRDPRAGRPPRPAAGPATCATRAARG  
 RRASPPPPPPGGAWAVRVPRRRQQREARGATEEPSPPSRALYFSGRGEQLRL  
 RADLELPRDAFTLQVWLRAEGGQRSPAVITGLYDKCSYISRDRGWVVGIHTISDQDN  
 KDPRYFFSLKTDRARQVTTINAHRSYLPQWVYLAATYDQGFMKLYVNGAQVATSG  
 EQVGGIFSPLTQKCKVLMGGSALNHNYRGYIEHFSLWKVARTQREILSDMETHGA  
 HTALPQLLLQENWDNVKHAWSMPKDGSSPKVEFSNAHGFLDTSLEPPLCGQTLC

 Tel: 1-631-559-9269 1-516-512-3133

 Email: [info@creative-biomart.com](mailto:info@creative-biomart.com)  Fax: 1-631-938-8127

 45-1 Ramsey Road, Shirley, NY 11967, USA

DNTEVIASYNQLSSFRQPKVVRYRVVNLIEDDHKNPTVTREQVDFQHHQLAEAFKQ  
 YNISWELDVLEVSNSLRRRLILANCDISKIGDENCDCPECNHTLTGHDGGDCRHLRH  
 PAFVKKQHNGVCDMDCNYERFNFDGGGCCDPEITNVTQTCFDPDSPHRAYLDVNE  
 LKNILKLDGSTHLNIFFAKSSEELAGVATWPWDKEALMHLGGIVLNPSFYGMPGHT  
 HTMIHEIGHSLGLYHVFRGISEIQSCSDPCMETEPSFETGDLCDNTNPAPKHKSCGD  
 PPGNDTCGFHSFFNTPYNNFMSYADDDCTDSFTPNQVARMHCYLDLVYQGWQP  
 SRKPAPVALAPQVLGHTTDSVTLEWFPPIDGHFFERELGSACHLCLEGRILVQYASN  
 ASSPMPCCSPSGHWSPREAEGHPDVEQPCSSVRTWSPNSAVNPHTVPPACPEPQ  
 GCYLELEFLYPLVPESLTIWVTFVSTDWDSSGAVNDIKLLAVSGKNISLGPQNVFCDV  
 PLTIRLWDVGEVYGIQIYTLDEHLEIDAAMLTSTADTPLCLQCKPLKYKVVRDPPLQ  
 MDVASILHLNRKFVMDLNLGVSYYWVITISGTEESESPAVTYIHGSGYCGDGIQ  
 KDQGEQCDDMNKINGDGC SLFCRQEVSFNCIDEPSRCYFHDGDGVCEEFEQKTSIK  
 DCGVYTPQGFLDQWASNASVSHQDQQCPGWVIIGQPAASQVCRTKVIDLSEGISQH  
 AWYPCTISYPYSQLAQTTFWLRAYFSQPMVAAVIVHLVTDGTYYGDKQETISVQL  
 LDTKDQSHDLGLHVLSCRNNLIIPVVHDLSQPFYHSQAVRVVSFSSPLVAISGVALRS  
 FDNFDPVTLSSCQRGETYSPAEQSCVHFACEKTDCPELAVENASLNCSSSDRYHGA  
 QCTVSCRTGYVLQIRRDDELIKSQTGPSVTVTCTEGKWNKQVACEPVDCSIPDHHQ  
 VYAAFSCPEGTTFGSQCSFQCRHPAQLKGNNLLTCMEDGLWSFPEALCELMCL  
 APPVPNADLQTARCRENKHKVG SFCKYKCKPGYHVP GSSRKS KRAFKTQCTQD  
 GSWQEGACVPVTC DPPP KFHGLYQCTNGFQFNSECRKCEDSDASQGLGSNVIH  
 CRKDGTWNGSFHVCQEMQGQCSVPNELNSNLKLC PDGYAIGSECATSCLDHNS  
 ESIILPMNVTVRDIPHWNPTRVERVVCTAGLKWYPPHALIHCVKGCEPFMGDNYCD  
 AINNRAFCNYDGGDCCTSTVKTKKVT PPFMSCDLQGDCA CRDPQAQEHSRKDLRG  
 YSHGSGPTRTRPLEQKLISEEDLAANDILDYKDDDDKV

**Purity** > 80% as determined by SDS-PAGE and Coomassie blue staining

**Stability** Stable for 3 months from receipt of products under proper storage and handling conditions.

 Tel: 1-631-559-9269 1-516-512-3133

 Email: [info@creative-biomart.com](mailto:info@creative-biomart.com)  Fax: 1-631-938-8127

 45-1 Ramsey Road, Shirley, NY 11967, USA

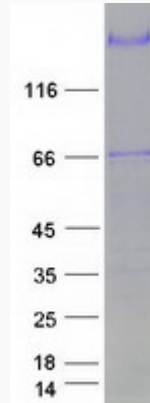
<b>Storage</b>	Store at -80 centigrade. Avoid repeated freeze-thaw cycles.
<b>Concentration</b>	50 µg/mL as determined by BCA
<b>Storage Buffer</b>	100 mM glycine, 25 mM Tris-HCl, pH 7.3.
<b>GENE INFORMATION</b>	
<b>Gene Name</b>	PAPPA pappalysin 1 [ Homo sapiens (human) ]
<b>Official Symbol</b>	PAPPA
<b>Synonyms</b>	PAPPA; pregnancy-associated plasma protein A, pappalysin 1; pappalysin-1; ASBABP2; aspecific BCL2 ARE binding protein 2; differentially placenta 1 expressed protein; DIPLA1; IGFBP 4ase; insulin like growth factor dependent IGF binding protein 4 protease; PAPA; PAPP A; PAPPA1; IGF-dependent IGFBP-4 protease; aspecific BCL2 ARE-binding protein 2; pregnancy-associated plasma protein A; insulin-like growth factor-dependent IGF binding protein-4 protease; insulin-like growth factor-dependent IGF-binding protein 4 protease; PAPP-A; IGFBP-4ase;
<b>Gene ID</b>	5069
<b>mRNA Refseq</b>	NM_002581
<b>Protein Refseq</b>	NP_002572
<b>MIM</b>	176385
<b>UniProt ID</b>	Q13219

 Tel: 1-631-559-9269 1-516-512-3133

 Email: [info@creative-biomart.com](mailto:info@creative-biomart.com)  Fax: 1-631-938-8127

 45-1 Ramsey Road, Shirley, NY 11967, USA

**SDS-PAGE**



 Tel: 1-631-559-9269 1-516-512-3133

 Email: [info@creative-biomart.com](mailto:info@creative-biomart.com)  Fax: 1-631-938-8127

 45-1 Ramsey Road, Shirley, NY 11967, USA