

Recombinant Human PAPPA Protein, His&Avi tagged

Cat. No. PAPPA-1607H Lot. No. (See product label)

SPECIFICATION

Product Overview	Recombinant Human PAPPA Protein with His&Avi tag was expressed in HEK293.
Species	Human
Source	HEK293
ProteinLength	82-1627 aa
Description	This gene encodes a secreted metalloproteinase which cleaves insulin-like growth factor binding proteins (IGFBPs). Following IGFBP cleavage, insulin growth factors dissociate from IGFBPs and bind to IGF receptors, resulting in activation of the IGF pathway. The encoded protein plays a role in bone formation, inflammation, wound healing and female fertility. Enhanced expression of this protein is associated with diabetic nephropathy in human patients and this protein may promote tumor invasion and growth in various human cancers.
Tag	His&Avi
Molecular Mass	175 kDa
AA Sequence	EARGATEEPSPPSRALYFSGRGEQLRLRADLELPRDAFTLQVWLRAEGGQRSPAVI TGLYDKCSYISRDRGWVVGIIHTISDQDNKDPRYFFSLKTDRARQVTTINAHRSYLPG QWVYLAATYDGGQFMKLYVNGAQVATSGEQVGGIFSPLTQKCKVLMGGSALNHNY RGYIEHFSWLKQVARTQREILSDMETHGAHTALPQLLLQENWDNVKHAWSMKDGS SPKVEFSNAHGFLDTSLEPPLCGQTLCDNTEVIASYNQLSSFRQPKVVRVYRVVNLV

 Tel: 1-631-559-9269 1-516-512-3133

 Email: info@creative-biomart.com  Fax: 1-631-938-8127

 45-1 Ramsey Road, Shirley, NY 11967, USA

EDDHKNPTVTREQVDFQHHQLAEAFKQYNISWELDVLEVSNSLRRRLILANCDISKI
 GDENCDPECNHTLTGHDGGDCRHLRHPAFVKKQHNGVCDMDCNYERFNFDGGEC
 CDPEITNVTQTCFDPDSPHRAYLDVNELKNILKLDGSTHLNIFFAKSSEEELAGVATW
 PWDKEALMHLGGIVLNPSFYGMPGHTHTMIHEIGHSLGLYHVFRGISEIQSCSDPCM
 ETEPSFETGDLNNDTNPAPKHKSCGDPGPGNDTCGFHSFFNTPYNNFMSYADDDC
 TDSFTPNQVARMHCYLDLVYQGWQPSRKAPVALAPQVLGHTTDSVTLEWFPPID
 GHFFERELGSACHLCLEGRILVQYASNASSPMPSPSGHWSPREAEGHPDVEQPC
 KSSVRTWSPNSAVNPHTVPPACPEPQGCVLEFLYPLVPESLTIWVTFVSTDWDS
 SGAVNDIKLLAVSGKNISLGPQNVFCDVPLTIRLWDVGEVYGIQIYTLDEHLEIDAAM
 LTSTADTPLCLQCKPLKYKVVRDPPLQMDVASILHLNRKFVDMDLNLGSVYQYVWITI
 SGTEESESPAVTYIHGSGYCGDGIIQKDQGEQCDDMNKINGDGCSLFCRQEVSN
 CIDEPSRCYFHDGDGVCEEFEQKTSIKDCGVYTPQGFLDQWASNASVSHQDQQCP
 GWVIIGQPAASQVCRTKVIDLSEGISQHAWYPTISYPYSQLAQTTFWLRAYFSQPM
 VAAAVIVHLVTDGTYYGDKQETISVQLLDTKDQSHDLGLHVLSCRNNPLIIPVVHDL
 SQPFYHSQAVRVSFSSPLVAISGVALRSFDNFDVTLSSCQRGETYSPAEQSCVHF
 ACEKTDCELAVENASLNCSSSDRYHGAQCTVSCRTGYVLQIRRDDELIKSQTGPS
 VTVTCTEGKWNKQVACEPVDCSIPDHHQVYAASFSCPEGTTFGSQCSFQCRHPAQ
 LKGNNSLLTCMEDGLWSFPEALCELMCLAPPPVPNADLQTARCRENKHKVGSFCK
 YKCKPGYHVPGSSRKSJKRAFKTQCTQDGSWQEGACVPVTCDDPPPKFHGLYQC
 TNGFQFNSECRKCEDSDASQGLGSNVIHCRKDGTWNGSFHVCQEMQGCQSVPN
 ELNSNLKLQCPDGYAIGSECATSCLDHNSESIILPMNVTVRDIPHWLNPTRVERVVCT
 AGLKWYPHPALIHCVKGCEPFMGDNYCDAINNRAFCNYDGGDCCTSTVKTKKVT
 PFPMSCDLQGDCACRDPQAQEHRSRDLRGYSHGHHHHHHHHHGLNDIFEAQKIEWHE


Endotoxin <1 EU/μg by LAL

Purity > 85% by SDS-PAGE

Storage Store it under sterile conditions at -20 to -80 centigrade. It is recommended that the protein be aliquoted for optimal storage. Avoid repeated freeze-thaw cycles.

 Tel: 1-631-559-9269 1-516-512-3133

 Email: info@creative-biomart.com  Fax: 1-631-938-8127

 45-1 Ramsey Road, Shirley, NY 11967, USA

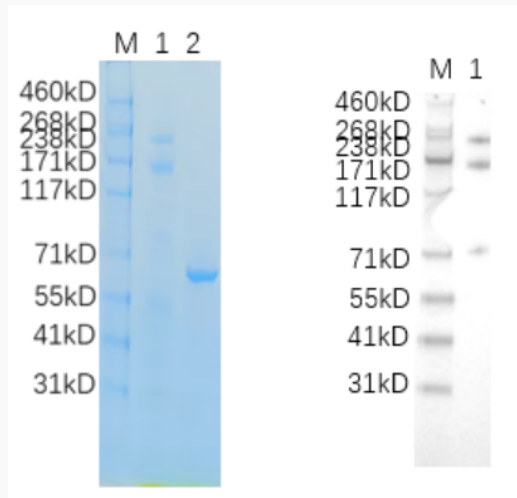
Storage Buffer	Sterile PBS, pH7.4
Concentration	0.34 mg/mL by BCA
GENE INFORMATION	
Gene Name	PAPPA pappalysin 1 [Homo sapiens (human)]
Official Symbol	PAPPA
Synonyms	PAPPA; pregnancy-associated plasma protein A, pappalysin 1; pappalysin-1; ASBABP2; aspecific BCL2 ARE binding protein 2; differentially placenta 1 expressed protein; DIPLA1; IGFBP 4ase; insulin like growth factor dependent IGF binding protein 4 protease; PAPA; PAPP A; PAPPA1; IGF-dependent IGFBP-4 protease; aspecific BCL2 ARE-binding protein 2; pregnancy-associated plasma protein A; insulin-like growth factor-dependent IGF binding protein-4 protease; insulin-like growth factor-dependent IGF-binding protein 4 protease; PAPP-A; IGFBP-4ase;
Gene ID	5069
mRNA Refseq	NM_002581
Protein Refseq	NP_002572
MIM	176385
UniProt ID	Q13219

 Tel: 1-631-559-9269 1-516-512-3133

 Email: info@creative-biomart.com  Fax: 1-631-938-8127

 45-1 Ramsey Road, Shirley, NY 11967, USA

**Reducing 4%-20%
SDS-PAGE (CBB
stained) and WB
(Anti-His Mouse
Monoclonal
antibody) analysis
profiles of purified
PAPPA.**



1. PAPPA: 1 μ g
2. BSA: 1 μ g

 Tel: 1-631-559-9269 1-516-512-3133

 Email: info@creative-biomart.com  Fax: 1-631-938-8127

 45-1 Ramsey Road, Shirley, NY 11967, USA